

WELCOME TO **TOWNSVILLE**



ANNUAL GUIDE 2026 - 2027 **RAAF BASE TOWNSVILLE & LAVARACK BARRACKS**

ABOUT THE BASE

History, operational units
and community

FAMILY ESSENTIALS

Services, housing, health
and education

LIFESTYLE

Local attractions
and activities

Proudly supporting Defence Personnel for over 20 years.

Smart™

We're here to help you save on tax so you have more to spend on what matters most to you and your family.



Pay less tax by salary packaging...



Portable Electronic Devices*

Salary package one eligible mobile phone, laptop, tablet or smartwatch per year when used for work.



A new or used car

Enjoy potential tax savings on a vehicle and eligible running costs, bundled into one convenient payment.



Superannuation

Invest in your future by making voluntary pre-tax contributions to your super.

...and much more



Get started today
smart.com.au/defence
1300 476 278

Official salary
packaging provider
to Defence members

+ Your employer determines which portable electronic devices can be salary packaged. As per ATO guidelines, portable electronic devices must be used primarily for work purposes (over 50%) to be salary packaged. This is general information only. Before entering into any salary packaging or novated leasing arrangement, you should consider your objectives, financial situation and needs, and obtain appropriate legal, financial, or other professional advice based upon your own particular circumstances. Smartsalary Pty Ltd, ABN 24 096 796 100, a Smart™ company.

CONTENTS

- 4 WELCOME
Messages from the SADFO and local leaders

RAAF BASE TOWNSVILLE

- 6 ABOUT THE BASE
A short introduction to RAAF Base Townsville
- 8 RAAF UNITS
Who you'll find on base
- 13 RAAF TOWNSVILLE AVIATION
HERITAGE CENTRE
- 14 ARMY UNITS
16th Aviation Brigade
- 16 BASE COMMUNITY
Support and networking groups
- 18 DEFENCE MEMBER AND FAMILY SUPPORT
Help for ADF members and their families

FAMILIES

- 20 LOCAL SERVICES
A quick guide to services and amenities
- 22 HOUSING
Finding a home in your new posting
- 24 HEALTH
Services to help manage your family's health

MAPS OF THE AREA

- 26 TOWNSVILLE CBD & SUBURBS
- 28 THE REGION



LAVARACK BARRACKS

- 30 ARMY'S LARGEST GARRISON
An introduction to Lavarack Barracks

EDUCATION

- 32 EARLY LEARNING
Childcare and early learning services
- 34 SCHOOLING
The Queensland school system
- 38 DMFS EDUCATION SUPPORT
Help available for Defence kids

VETERANS

- 40 THE VETERAN COMMUNITY
Support for veterans of all ages

LIFESTYLE

- 44 TIME OUT
Explore Townsville and the North
Queensland region

VALUED SUPPORTERS

- 49 A directory of advertisers and sponsors

ON THE COVER

A RAAF F-35A Lightning II aircraft departs RAAF Base Townsville during Exercise High Sierra 2025.
PHOTO: CPL Sam Price

CONTACTS

RAAFANSW Publications Pty Ltd,
Salamander Bay LPO,
PO Box 656, Salamander Bay 2317
EMAIL neil.smith@raafapublications.org.au
raafapublications.org.au

MANAGING DIRECTOR AVM Neil Smith (Retd)

ADVERTISING EXECUTIVES

David Jones, david.jones@wingsmagazine.org
Mike Harris, mike.harris@raafapublications.org.au

EDITOR Sandy McPhie

ART DIRECTOR Katie Monin

RAAF COMMUNICATIONS ADVISOR

WOFF Anthony Hordern

DIGITAL EDITION

To read this guide online, go to
welcomeguides.org.au

DISCLAIMER

Information in the articles in this guide was current at time of publication but more recent developments should be checked with the relevant Defence and other authorities for currency and any changes to conditions. Content appearing in this publication does not necessarily reflect the views or have the endorsement of the Department of Defence or the publisher. While every effort has been made to ensure accuracy and currency in the information presented, reliance should not be placed on the content without reference to the relevant authorities. No part of this guide may be reproduced without the written consent of RAAFANSW Publications. No responsibility is accepted by the publisher for the accuracy of advertisements or information.



RAAFA PUBLICATIONS

A not-for-profit company wholly owned by the Air Force Association, RAAFANSW Publications Pty Ltd publishes *Welcome to Townsville* as service to ADF families and visitors in collaboration with RAAF Base Townsville.

WELCOME TO TOWNSVILLE



LOCATED ON THE DOORSTEP of the tropics and backed by a proud legacy of service, RAAF Base Townsville stands as a vital pillar of Australia's northern defence posture. It is with great pride that we welcome visitors and members of our wider Defence family to one of the most strategically significant air bases in the country.

Here we acknowledge the Wulgurukaba people, the traditional custodians of the land on which RAAF Base Townsville is situated, and pay respects to their Elders past and present.

For more than eight decades, this base has played a key role in protecting Australia's interests, from its pivotal involvement in World War II operations through to its modern-day contributions across the Indo-Pacific region. Today, RAAF Base Townsville supports a range of Air Force and Army units, as well as ongoing humanitarian, disaster relief and training operations that keep our Defence Force responsive and ready. But beyond its strategic importance, this base is built on people – our serving members, civilian personnel and the tight knit community that supports and sustains us. The connection between Defence and the City of Townsville is a unique and enduring one, forged through shared history and mutual respect.

As you explore these pages, we invite you to learn more about the operations, stories and individuals that make RAAF Base Townsville not just a place of work, but a place of pride.

Welcome.

WING COMMANDER DOMINIQUE HOFFMAN

Commanding Officer 27 Squadron

Senior Australian Defence Force Officer – RAAF Townsville and RAAF Scherger

ACKNOWLEDGEMENT TO COUNTRY

RAAF Base Townsville pays its respects to the Wulgurukaba, Bindal, Nywaigi and Gugu-Badhun people and their Elders past, present and emerging. We acknowledge the lands and waterways which RAAF Base Townsville is founded alongside its wetlands (Wombaluna) and its significance to the Wulgurukaba people. They are spiritually connected to this land and continue the same commitment passed down by their elders to care for these land as their forefathers have.

→ A Wulgurukaba Traditional Custodian Group performer during a smoking ceremony to celebrate the opening of the yarning circle at RAAF Base Townsville.



PHOTO: LAC Ryan Howell



COUNCILLOR NICK DAMETTO

Mayor of the City of Townsville

ON BEHALF OF THE CITY OF TOWNSVILLE and Townsville City Council, I extend a sincere welcome to you and your families to our vibrant city and to RAAF Base Townsville.

We are a proud Defence city. RAAF Base Townsville and its personnel are deeply ingrained in our rich history. Your presence here is part of who we are, and the contribution you make – through service, leadership and community involvement – is deeply valued, respected and will contribute to you leaving your own mark on Townsville.

We're a city built on resilience, hard work and looking after one another. From our beaches and bushland to our sporting clubs, schools and local businesses, Townsville offers a place to live, work and raise a family that is hard to rival.

Whether you're posted here for a short time, or setting down roots for the longer term, I encourage you to get involved, support local, and make the most of everything our region has to offer. I hope, like for many Defence members before you, Townsville has a unique way of enticing you to stay. I'm proud to say our Defence members form a valuable part of our city's social fabric.

Thank you for your service and commitment. Townsville is proud to have you here and proud to stand alongside our city's Defence personnel.



JANELLE POOLE APM
State Member for Mundingburra

IT IS MY ABSOLUTE PLEASURE to welcome you to the RAAF Base Townsville and to our wonderful community. Townsville is the largest garrison city in Australia and it is a badge of honour we wear with pride. Our current and former servicemen and women are woven into the fabric of our community. It is our common bond and a legacy we honour every day.

I was born and raised in Townsville and in my 28 years as a Queensland police officer, my career, much like yours, took me elsewhere at times. However, my home has and will always be this beautiful city.

I am often asked what makes Townsville such a beautiful place to live and far and above all else, it is the people.

We welcome you here and I hope you not only make Townsville your home, but you embrace our city and contribute your own positive impact to our community.

It is truly an honour to represent you and our community in the state parliament. If there is ever anything I can assist with, please do not hesitate to contact me on 07 4766 8100 or at mundingburra@parliament.qld.gov.au

Janelle Poole is Assistant Minister for Community Safety, Defence Industry, Veterans and North Queensland.



NATALIE MARR
State Member for Thuringowa

IT'S MY GREAT PLEASURE to welcome you and your family to Townsville and to RAAF Base Townsville.

Townsville is a community that truly understands and celebrates Defence service. As Queensland's premier garrison city, we take immense pride in the vital role our ADF families play here, shaping the spirit of our schools, sports clubs, local businesses and everyday life.

RAAF Base Townsville stands as a cornerstone of our region's proud history and bright future. Defence families are respected, supported and warmly included as part of the fabric of North Queensland.

Relocating with Defence can bring exciting opportunities alongside some challenges. Rest assured, Townsville gets it – and we've got your back.

As your state member, I am always ready to help with guidance, assistance, or simply a listening ear. You'll often spot me at my "Chat with Nat" mobile offices and casual pop-up events across Thuringowa, perfect chances to say hello, raise a concern, or just have a yarn.

My team warmly welcomes Defence families anytime – phone 4766 3100 or email Thuringowa@Parliament.qld.gov.au.

Thank you for your service to our nation. Welcome to this remarkable corner of Australia. We hope you'll quickly feel right at home here.



ADAM BAILLIE MP
State Member for Townsville

WELCOME TO TOWNSVILLE, Australia's largest garrison city and your new home.

As your state member for Townsville, I'm proud to extend a warm North Queensland welcome to all Defence personnel and their families joining us at RAAF Base Townsville.

This region has a proud and longstanding connection to the Australian Defence Force, and we are honoured by your service and presence in our community.

Townsville offers more than just strategic significance. It's a vibrant, family-friendly city with access to exceptional schools and universities, sporting clubs, beautiful beaches and a deep respect for those in uniform.

Whether you're here for the first time or returning, you'll quickly discover why so many Defence families choose to stay. From The Strand to the surrounds of Castle Hill, Magnetic Island and the great North Queensland outdoors – this is a region with opportunity, lifestyle and purpose.

I want you to know that my office is always open to support our Defence community. Thank you for your service, and welcome to Townsville – a proud garrison city that backs our troops every step of the way.



PHILLIP THOMPSON OAM
Federal Member for Herbert

WELCOME TO TOWNSVILLE! It's a privilege to have you posted here and to call our city home. My name is Phillip Thompson and I am your federal member for the electorate of Herbert.

My Defence career began here in Townsville with the 1st Battalion, Royal Australian Regiment. I deployed to East Timor and, in 2009 while on operations in Afghanistan, I was wounded on a dismounted patrol when an improvised explosive device detonated in front of me. After being medically discharged from the Army, I entered politics to continue serving our community and our country.

Having served in uniform, I understand the unique nature of Defence life and the significance of moving to a new posting. Townsville is a wonderful place to live, work and raise a family. We are a proud Defence city with a strong support network, outstanding lifestyle opportunities, and deep respect for those who serve.

My team and I are here to assist you and your family with any issues you may face during your time in the region. Please don't hesitate to reach out if we can help.

Welcome again, and I hope you settle in quickly and enjoy everything our community has to offer.

philthompson.com.au

GUARDING THE NORTH



Celebrating 86 years of operations in 2026, RAAF Base Townsville is one of Northern Australia's primary Defence installations.



↑ An AH-64E Apache from the 1st Aviation Regiment taxis during its first flight at RAAF Base Townsville, 27 November 2025.

PHOTO: SGT Jarrod McAnaney

IN 1939, TOWNSVILLE CITY COUNCIL

transferred the city airport to the Royal Australian Air Force (RAAF). RAAF Base Townsville was formed on 15 October 1940 and has a long and proud association with the people of North Queensland.

Along with RAAF Base Darwin, RAAF Base Townsville is one of northern Australia's primary Defence installations and this is reinforced by the base badge motto 'Guard the North'.

In 1942, RAAF Base Townsville played a critical role in the Battle of the Coral Sea and at one point was one of the largest US Army Air Force bases outside of the United States.

The base is strategically important as it is often used as a staging or stepping-off point for forces being deployed on military operations, including Australian humanitarian and peacekeeping efforts.

RAAF Base Townsville is home to a large number of units including:

- No 27 (City of Townsville) Squadron
 - the Airbase Operations Squadron
- No 65 Air Base Recovery Squadron
- No 383 Squadron – contingency response
- No 452 Squadron Townsville Flight
 - air traffic control
- 1 Expeditionary Health Squadron Detachment Townsville
- RAAF Combat Survival Training School – ADF aircrew survival, evasion and escape training.



PHOTO: LACW Nell Bradbury

↑ **PC-21 Pilatus aircraft from No 4 Squadron taxi onto the flight line at RAAF Base Townsville during Exercise Black Dagger 25-2.**

→ **A RAAF F/A-18F Super Hornet aircraft departs RAAF Base Townsville during Exercise Crimson Dawn 2025.**

↘ **Aerial view of RAAF Townsville in 1942.**



PHOTO: CPL Sam Price

The base is also host to the Army's 16 Aviation Brigade HQ with the following units in Hamel lines:

- No 5 Aviation Regiment flying CH47F
- No 1 Aviation Regiment (2027) flying AH-64E Apache helicopters
- No 16 Aviation Support Battalion.

The base also hosts the wing headquarters of No 1 Wing Australian Air Force Cadets along with 101 Squadron Australian Air Force Cadets. A recent and most welcome arrival is Training Ship *Coral Sea* of the Australian Navy Cadets.

RAAF Base Townsville is also well positioned as the mounting base for Army's Townsville-based 3rd Brigade and as a training base for Air Force's Air Combat Group and Air Mobility Group.

It may also be used as a mounting base or forward operating base for Air Force operations and Naval Support operations in the Coral Sea.

HQ RAAF Base Townsville is also directly responsible for personnel and ADF assets located at RAAF Base Scherger. RAAF Base Scherger is one of the RAAF's three bare bases, completing a chain of bases across Australia's top end. It was officially opened by Prime Minister John Howard on 5 August 1998. The base is located 26km east of Weipa on the western side of Cape York Peninsula in Queensland. It has facilities to cater for 400 personnel in fixed accommodation, 1,000 personnel in tent lines and about 40 aircraft.

During peacetime, RAAF Base Scherger hosts, on average, one major exercise per year in which the base is fully activated through the arrival of RAAF units based elsewhere in Australia. Minimal facilities and infrastructure have been established to support military deployments and exercises. RAAF Base Scherger consists of a 3,050m long runway with a parallel taxiway and one oblique taxiway, which can also be used as an emergency runway.

Both RAAF Base Townsville and RAAF Base Scherger are commanded by the Senior Australian Defence Force Officer Wing Commander Dominique Hoffman.





↑ A RAAF aviator marshals a Royal New Zealand Air Force 757-2K2 aircraft on its arrival at RAAF Base Townsville ahead of Exercise Talisman Sabre 2025.

RAAF UNITS



NO 27 (CITY OF TOWNSVILLE) SQUADRON

No 27 (City of Townsville) Squadron forms part of No 96 Wing of Combat Support Group, Air Command, and is headquartered at RAAF Base Townsville. The squadron provides air base support for operations from RAAF Bases Townsville and Scherger.

No 27 (City of Townsville) (Auxiliary) Squadron was first formed as a RAAF Active Reserve at RAAF Townsville on 1 July 1981 to support the Townsville-based units and train reservists. Soon after formation, the squadron began regular weekend camps where members received training in first aid, firefighting, rifle shooting and parade drill.

The squadron received a boost in mid-1984 when its Link Trainer became operational.

The squadron's technical personnel engaged in restoring historical aircraft as a way of building and maintaining skills. The restored aircraft were then put on display.

On its 10th anniversary, 27SQN was granted Freedom of the City of Townsville.

In January 1996, the squadron came under the command of No 323 Air Base Wing and on 1 July 2010, all city squadrons were transferred to Combat Support Group. The squadron was placed under the command of No 396

Expeditionary Combat Support Wing (later renamed 96 Wing).

No 27 Squadron maintains a high tempo of operations supporting resident and transiting units at Townsville. The squadron delivers all air base operations including the air base command post, engineering and maintenance of all ground equipment, logistics, air and road movements, armament management, public affairs, chaplaincy, safety, security and physical training. It also provides a technical duty crew which delivers nitrogen, oxygen

and liquid dry breathing oxygen in support of flying operations.

27SQN personnel have deployed on military and humanitarian operations.

In its 45-year history, 27SQN has demonstrated initiative and innovation, exemplified by the development of an Aircraft Arrestor System (AAS) training aid. It allows all AAS electrical and pneumatic faults to be selected and presented to trainees and also incorporates an air traffic control indication panel.



↑ Officer Commanding 96 Wing Inspection Tour to RAAF Base Scherger in Weipa, North Queensland.



NO 65 AIR BASE RECOVERY SQUADRON

No 65 Air Base Recovery Squadron (65 ABR5) was formed on 1 July 2015, combining Combat Support Group's Airfield Engineering and Explosive Ordnance Disposal capabilities. As the only civil engineering unit within Air Force, it is responsible for providing Airfield Damage Recovery capabilities to the ADF, ensuring air power can continue to be generated from both fixed and agile airfield sites.

The unit maintains detachments at RAAF Base Townsville, RAAF Base Richmond and Defence Establishment Orchard Hills. 65 ABR5 supports ADF deployments and exercises both domestically and internationally, with personnel regularly exercising with US units and other regional partners. Additionally, personnel participate in Exercise Olgeta Aviator (PNG), Operation Render Safe (South West Pacific) and Op Saunders (Australian Army Community Assistance Program).

→ 65 ABR5 Commanding Officer, WGCDR Kenneth Edwards.



PHOTO: CPL Brett Sherriff

↑ Aviators from 65 ABR5 work with counterparts from the Royal Canadian and United States Air Forces to repair craters in an airstrip at Townsville Field Training Area.

← An Explosive Ordnance Disposal assistant from 65 ABR5 assesses a Mark 82 bomb at the end of an airstrip at the Townsville Field Training Area.



NO 383 SQUADRON

First established as Base Support Flight in 1966, No 383 Squadron (383SQN) has a rich military history evolving over the years to its present-day state with its mission and purpose: to provide scalable, expeditionary airbase

operations to enable the projection of airpower. 383SQN is one of three Contingency Response Squadrons in the RAAF. Under the command of HQ 96WG, 383SQN is capable of establishing and sustaining operations in austere and uncertain security environments, and when deployed will augment the squadron's High Ready Team with additional personnel from Combat Support Group.

383SQN provides rapid and ready response to establish and operate expeditionary airfields and airbases, and to conduct humanitarian and disaster-relief assistance, both within Australia and internationally. The squadron consists of a team of 32 highly trained personnel (including reservists) across various employment categories: personnel capability specialists, suppliers, air movements, catering, firefighters, network technician, physical training instructor, and Air Force security.



PHOTO: CPL Glen McCarthy



← 383SQN Commanding Officer, WgCDR Tai Kohn.

← 383SQN suppliers relocate equipment inside the 383SQN warehouse at RAAF Townsville.



↑ 383SQN personnel boarding a 375SQN C-130.



NO 1 EXPEDITIONARY HEALTH SQUADRON

No 1 Expeditionary Health Squadron (IEHS) was first formed as No 1 Air Transportable Health Squadron (IATHS) at Amberley on 18 December

2001. In 2009, IATHS was renamed IEHS in response to growing demand for deployed health services supporting the ADF operations in the Middle East and other locations, and the health flight at Townsville became the first detachment. A further rebalance occurred in 2019 with IEHS taking command of the detachments in Richmond, Wagga and East Sale.

The primary mission of IEHS is to protect and preserve patients through the responsive delivery of comprehensive expeditionary and fixed-base health support to Air Force, wider ADF exercises and operations. The primary expeditionary roles include:

- Delivery of the Air Force Role 2 Medical Treatment Facility
- Resuscitative Surgical Capability
- Enduring Operational Health Support to deployment liabilities.

IEHS provides fixed-base support through



PHOTO: CPL Brett Sherriff

↑ Members from IEHS and the Pacific Air Forces participate in scenarios in their Role 2 Forward Medical Treatment Facility as part of Exercise Viper Walk 2024.

→ IEHS Commanding Officer, WCDR Ajitha Sugnamam.

contributions to Joint Health Command (JHC) via Aerodrome Emergency Health Response and Garrison Clinical Duties (GCD). IEHS is committed to maximising GCD within JHC facilities, which compliments external clinical placements to optimise health service delivery to Air Force.

Moving into the future, IEHS will generate and posture forces to deliver scalable health capabilities for the integrated force in a range of threat environments with a suite of new equipment.



COMBAT SURVIVAL TRAINING SCHOOL

Following the Korean War, it was identified that there was a need for aircrew to undertake combat survival training. This resulted in the first combat survival courses being held from 1955 at the Army's jungle

training centre in Canungra, Queensland. In 1967, the Combat Survival Training Flight (CSTF) was established at RAAF Base Amberley with practical phases of the training being conducted in the Numinbah Valley.

In July 1979, the CSTF moved to RAAF Base Townsville due to the availability of better training areas and, in February 1987, the CSTF became the Combat Survival Training School (CSTS). CSTS moved from Operational Command to Training Command (now Air Force

Training Group) in 1990 and forms part of the aircrew training system within Air Academy.

The CSTS mission is to provide Survive, Evade, Resist, Escape training and support effects focused on contemporary operational contingencies in order to enable integrated Joint Personnel Recovery capability and preparedness. CSTS also provides specialist combat survival advice and subject matter experts to the ADF to assist with deployment and exercise planning.



PHOTO: SGT Kirk Peacock



PHOTO: SGT Kirk Peacock

↑ Participants help one another to enter a life raft during CSTS sea survival training.

← A CSTS instructor demonstrates to students how to light a signal fire.



NO 452 SQUADRON – TOWNSVILLE FLIGHT

Having a distinguished history as a World War II fighter squadron, No 452 Squadron was reformed in 2011 as an air traffic control (ATC) squadron,

with its headquarters located at RAAF Base Darwin. No 452 Squadron – Townsville Flight provides ATC for RAAF Base Townsville, 5th Aviation Regiment, visiting military forces and Townsville Airport. Townsville Flight has nearly 50 personnel, both military and Australian Public Service, comprising ATC officers, communication electronic technicians and logistic staff. Townsville Flight ATC is responsible for managing Townsville’s airspace, and for the separation and sequencing of all aircraft movements that use the airbase, while the communication electronic technicians and logistic staff maintain ATC equipment at RAAF Base Townsville, Mount Louisa and Many Peaks (Pallarenda) to allow ATC to provide safe provision of air traffic services for Townsville.



PHOTO: SGT Andrew Eddie

↑ A No 452 Squadron Air Traffic Controller observes approaching aircraft to RAAF Base Townsville.

WINGS

A RAAF ENDORSED, QUARTERLY AVIATION MAGAZINE FOR ALL RANKS

ORIGINAL ARTICLES INCLUDING:

- AIR FORCE AND CIVIL AVIATION HISTORY
- MILITARY AND INDUSTRY NEWS SUMMARIES
- TECHNOLOGY DEVELOPMENT
- PERSONAL FINANCE AND LEADERSHIP
- CENTREFOLD PULL-OUT POSTER



FIND US: HARD COPIES ON THE BASE OR ONLINE
OR **SUBSCRIBE AT WINGSMAGAZINE.ORG**
FOR A PERSONAL COPY



AIR FORCE ASSOCIATION

SECURITY AND ESTATE GROUP

BASE MANAGEMENT IS part of Security and Estate Group Service Delivery Division for the Northern & Central Zone (Northern Territory, Queensland and the Kimberley, WA).

The team, led by the base manager, is responsible for the:

- coordination of essential services including security, estate upkeep, messing, accommodation, land management, cleaning and waste
- development of base plans and instructions to ensure compliance with legislative and regulatory requirements
- coordination of base-wide forums and heads of resident units engagements
- scheduling and coordination of base-wide emergency exercises and support to SADFO during critical incident responses.

The team's area of responsibility includes:

- 0854 - Australian Air Force Cadets
103 Squadron Ingham
 - 0872 - Bohle River Transmitter Station
 - 0874 - RAAF Townsville
 - 0875 - Ruediger Park
 - 0876 - Mount Louisa TACAN
 - 0877 - Many Peaks NAVAID
 - 1218 - RAAF Scherger
 - 1272 - Townsville Middle Marker Compound
 - 1273 - 5AVN Fire Booster Pump, Garbutt
 - 1493 - Coral Sea Early Childcare Centre, Kirwan
 - 1569 - DMFS Office, Nathan Business Centre
 - 9011 - Mt Cook Obstruction Beacon
- All general queries and non-urgent matters can be directed to the Base Management team inbox basemanagement.raaftownsville@defence.gov.au. If the matter is urgent, call 0409 465 217.



↑ **Lockheed P2V-7 Neptune A89-280 has served as a gate guardian at RAAF Base Townsville since 2012.**

← **Base Manager Jacinta Wallace.**

TOWNSVILLE HEALTH CENTRE – JOINT HEALTH UNIT NORTH QUEENSLAND



RAAF BASE TOWNSVILLE was formed on 15 October 1940 and since then there has been a medical health service on the base. Townsville Health Centre's current location is on the site of the old Airmen's Mess (former Building 70). The Airmen's Mess was one of the first buildings constructed in the early 1940s. Construction commenced in 2019 and the new Townsville Health Centre was opened on 5 May 2022.

The centre provides primary care including mental health and rehabilitation, outpatient unit, pharmacy, physiotherapy, dental, general support, airfield response and deployable health accommodation for No 1 Expeditionary Health Squadron Detachment.

It is a cutting-edge health centre on base, staffed by extremely capable, caring and dedicated doctors, nurses, allied health workers, and health administration staff, providing the most up-to-date medical care and support for our members.

OPENING HOURS

Monday - Thursday: 7.30am - 4pm
Friday: 7.30am - 1pm

SICK PARADE

Dental: 0900-0930hrs
Monday - Friday
Physio: 0900-1030hrs
Monday - Friday
Medical: 0900-1030hrs
Monday - Friday

AFTER HOURS

If you become unwell after business hours (0730-1600hrs), call 1800 IM SICK

(1800 467 425) for health advice or referral as required or attend Lavarack East Clinic – Patient Care Unit (PCU) open 24/7 – weekends and public holidays. PCU Sick Parade occurs from 0900 to 1100hrs for assessment.

MENTAL HEALTH

Psychologist: sick parade and intake services primarily available 0800hrs to 0830hrs Monday to Friday.

Mental health nurse: walk-in presentations 0730hrs to 1500hrs Monday to Thursday and until 1300hrs Friday. Alternatively, contact the All Hours Support Line on 1800 628 036 and Defence Member and Family Helpline on 1800 624 60.

INDIGENOUS LIAISON OFFICER

In 2017, positions were established for Indigenous Liaison Officers (ILOs) to support the engagement of Air Force commanders with Aboriginal and Torres Strait Islander communities. These members also assist in meeting Air Force's commitment to *Our Place, Our Skies*, Air Force's Aboriginal and Torres Strait Islander community engagement strategy, and the *Defence Reconciliation Action Plan*. RAAF Townsville/ Scherger ILO can be contacted via email at tv127sqnilo@resources.defence.gov.au.



↑ **RAAF Base Townsville Health Centre.**



PHOTO: FLOCOFF Casie Scott

TOWNSVILLE AVIATION HERITAGE CENTRE

THE RAAF TOWNSVILLE Aviation Heritage Centre was established in 2016. The centre was originally established as the RAAF Townsville Museum in 1982 via an association with the RAAF Museum at Point Cook, Victoria. It is now part of History and Heritage – Air Force (HH–AF). The mission for HH–AF is to collect, study, preserve, manage and promote records and artefacts from the Australian Flying Corps through to today’s Air Force to enhance capability and reputation, while meeting government and community expectations. The RAAF Townsville Aviation Heritage Centre performs this mission by focusing on regional areas of North Queensland where our Air Force operated from circa 1940. RAAF Base Townsville was established on 15 October 1940. Our Air Force has had a significant and rich history in North Queensland ever since.

The centre is newly refurbished and displays several hundred carefully curated and captioned images. These are presented alongside narrative history and cultural heritage artefacts, allowing visitors to learn about the history of aviation in the Townsville area from the 1920s to present. Significant content is on the air war effort during World War II and its impact

on the local community. Highlights include the bombing of Townsville and allied efforts with the United States Army Air Force. All our heritage is important and significant. Some of the displays that show off this heritage are a Mirage 1110 (A3-55), PC9/A Forward Air Control aircraft (A23-022), Winjeel (A85-403), Caribou (A4-199) and Neptune (A98-280).

The centre is located within a fenced compound at RAAF Base Townsville at the original 1940s entry point. The team at the centre is comprised of RAAF reserve and civilian volunteer members.

Opening hours: 9am to 12 noon every Sunday, Tuesday and Thursday.



↑ Visitors at the first public open day of the RAAF Townsville Aviation Heritage Centre on Sunday 17 August 2025.



PHOTO: FLOCOFF Casie Scott

↑ Centre team members Warrant Officer Andrew McCabe, Margaret Wilkinson and Flight Sergeant Rockliff prepare to welcome visitors on the first public open day of the RAAF Townsville Aviation Heritage Centre.



16TH AVIATION BRIGADE



THE 16TH AVIATION BRIGADE (16 Avn Bde) was formed on 2 April 2002 with the mission to enable battlefield aviation modernisation and force generate safe, effective and sustainable combat aviation effects in order to enable the integrated force. Over the past two decades, the brigade has undergone significant change and growth as part of Army's overall transformation to a world-class littoral fighting force designed to fight and win in the unique geography of our region. Previously based out of Gallipoli Barracks in Brisbane, Headquarters 16th Aviation Brigade relocated to RAAF Base Townsville in 2024. The brigade provides a centralised command structure for all Army aviation personnel and assets including the CH-47F Chinook, AH-64E Apache, UH-60M Black Hawk, and RA-21 Integrator uncrewed aerial system.

It now comprises six units in Queensland and New South Wales, including the 1st Aviation Regiment, 5th Aviation Regiment, 6th Aviation Regiment, 16th Aviation Support Battalion, 20th Regiment Royal Australian Artillery, and the Army Aviation Training Centre, which comprises of the School of Army Aviation and the Rotary Wing Aircraft Maintenance School.

← **Commander of the 16th Aviation Brigade, Brigadier Fern Thompson CSC.**



1ST AVIATION REGIMENT

Formed in 1966, the 1st Aviation Regiment is the Australian Army's only attack-helicopter unit, operating the Armed Reconnaissance Helicopter (ARH) Tiger and the AH-64E Apache attack helicopter. The regiment is responsible for generating safe, effective and sustainable attack aviation capabilities, enabling the integrated force. As the oldest aviation unit in the Army, the regiment has served in Timor-Leste, the Solomon Islands, domestically and, notably, in Vietnam, where 161 Reconnaissance Squadron saw extensive service as an independent unit. The regiment operated as a consolidated unit in Robertson Barracks, Darwin, from 2006 through 2024.

In 2025, the regiment commenced its movement to its new home at Hamel Lines, RAAF Base Townsville. This transition is occurring over three years, with half the regiment now operating the Apache in Townsville, while the remainder of the unit continues to operate the ARH Tiger from Darwin. Currently, the regiment headquarters, 161 Reconnaissance Squadron and Operational Support Squadron - Townsville are established and supporting flying operations out of RAAF Base Townsville. The remaining elements of 162 Reconnaissance Squadron, Operational Support Squadron - Darwin and the Regiment Q Store will see the year out in Darwin operating the ARH Tiger before the planned withdrawal of that platform at the end of 2026.



↑ **Commanding Officer, 1st Aviation Regiment, LTCOL Jason Perrins.**



5TH AVIATION REGIMENT

The 5th Aviation Regiment (5 Avn Regt) is an Australian Army aviation unit within the 16th Aviation Brigade. It was formed in 1987, after the Army gained responsibility for operating helicopters from the RAAF with both S-70A Black Hawk and UH-1 Iroquois. Throughout its history, the regiment has deployed overseas numerous times, supporting both peacekeeping and wartime operations within Cambodia, Papua New Guinea, East Timor, Iraq, Afghanistan, Indonesia and Pakistan. 5 Avn Regt has also supported the response to natural disasters in Fiji, Tonga, Vanuatu and within Australia,

most recently as part of the North Queensland Floods 2025.

Over the past 40 years, the regiment has operated the UH-1 Iroquois, S-70A Black Hawk, MRH-90 Taipan and CH-47 Chinook helicopters. Currently, it consists of C SQN, operating 14 CH-47F Chinook helicopters at RAAF Base Townsville, and B SQN, which operates the EC135 helicopters in anticipation of the arrival of UH-60M Black Hawk helicopters. These aircraft will establish a strong air assault capability that can support co-located call signs and also enables the brigade to provide a disaster-relief response if called upon by the Australian Government.



↑ **Commanding Officer,
5th Aviation Regiment,
LTCOL Bremner**



↑ **Australian Army pilots from the 1st Aviation Regiment work with United States Army pilots to conduct pre-flight checks during training in Townsville.**

↓ **Army AH-64E Apache helicopters from the 1st Aviation Regiment and a CH-47 Chinook from 5th Aviation Regiment at RAAF Base Townsville, 27 November 2025.**



↑ **A CH-47F Chinook from 5th Aviation Regiment conducts high-density altitude training in the Central Highlands of Papua New Guinea.**

PHOTO: CPL Dana Millington



AVIATION SUPPORT BATTALION

The 16th Aviation Support Battalion (16 ASB) formed

on 20 January 2025 to support the 16th Aviation Brigade in generating safe, effective and sustainable combat aviation capability. It consists of a mix of full-time and reservist Army and Air Force personnel, along with members of the Australian Public Service and civilian contractors. The battalion leverages the broad range of experience of their diverse workforce to provide logistics support to the AH-64E Apache and CH-47F Chinook helicopters in Townsville, and the UH-60M helicopters in Holsworthy and Oakey.

Within the battalion, there are three sub-units. The first being the Logistics Support Squadron, which provides logistics solutions to sustain the units and the helicopter fleets. Secondly, the Operations Support Squadron, which manages refuelling, explosive-ordnance loading, aircraft movements and operational planning support to helicopter operations. Finally, the 5th Workshop Company provides the deeper level maintenance and repair to each of the helicopter fleets to ensure they remain operationally ready.

PHOTO: SGT Jarrod McAnaney



↑ RAAF Base Townsville AAFcans cafe.

ADF COMMUNITY

GECKOS FAMILY CENTRE – NORTH QUEENSLAND

Geckos Family Centre provides services, support and activities to enhance family resilience within the Defence community of North Queensland. Geckos Family Centre is staffed by ADF members and acknowledges the diversity between, and within, our families. It creates an unconditionally positive hub which fosters resilience through a sense of connectedness and joy for all families and the Defence community. Geckos Family Centre provides a consistent positive engagement, social connections and a warm environment. [facebook.com/geckosfamilycentre](https://www.facebook.com/geckosfamilycentre)

WOMEN'S INTEGRATED NETWORKING GROUPS

It is not unusual for women in Defence to find themselves in roles traditionally filled by men, so it helps to have a little support from like-minded peers. That's where Women's Integrated Networking Groups (WINGs) comes in. WINGs is a program that supports women in the Air Force by providing an open forum for discussion, and also offers mentoring and role models, allowing women to see just how much they can achieve.

"Essentially, the program is about ongoing engagement with all Air Force women throughout aspects of their career. It offers professional development and personal growth – not to mention opportunity to meet other Air Force women on the base in a friendly, non-judgemental environment,"

says Wing Commander Sue Yates, WINGs National Program Coordinator.

WINGs gives opportunities to Air Force women to be mentored, meet other Air Force women from a variety of ranks and specialisations, and to seek guidance and advice from other Air Force career women, with the aim of giving them a sustainable and long-term career. "Sessions are organised by the WINGs Committee and open to all Air Force women in the region. Sessions may include a guest speaker from either within Defence or an external organisation to share their career challenges and highlights or provide strategies and tools useful to career female aviators," WGCCDR Yates says.

"Those Air Force women who have attended sessions have described WINGs as rewarding, relevant, inclusive and worth an investment of their time. Having a good cross section of ranks and experience adds to the networking and sharing of career experiences, as does the inclusion of male colleagues at some sessions to contribute to discussions and understand the challenges facing an under-represented element of our workforce."

Information on Townsville WINGs can be found at <http://drnet/raaf/AirForce/RAAFTVL/FAC/Pages/WINGS.aspx> or by emailing tv1.wings@defence.gov.au.

DEFENCE FAMILIES OF AUSTRALIA

Defence Families of Australia (DFA) is the official ADF families advisory body to the Minister for Defence Personnel and the Chief of the Defence

Force. DFA advocates for and provides advice to Defence and other stakeholders for ongoing improvement in policy and practical support in the best interests of ADF families across three core areas.

1. Family readiness

Supporting families to be well-prepared in the face of the unique demands of Defence life. This includes advocating for systems and resources that equip families to manage absences, deployments, and relocations with confidence and stability.

2. Contemporary families

Recognising and championing evolving family structures within the Defence community. Modern families are diverse and current policies and supports do not always reflect this. DFA is committed to ensuring inclusive representation that acknowledges single-parent families, blended families, same-sex couples and other non-traditional configurations.

3. Family wellbeing

Advocating for services and supports that enhance the overall wellbeing of Defence families. This includes ensuring access to mental health resources, community connection, employment support and family-friendly policies that are fit for purpose and responsive to real-world challenges.

Follow DFA on social media for advocacy updates or go to dfa.org.au.

DEFENCE SPECIAL NEEDS SUPPORT GROUP

Defence Special Needs Support Group Inc. (DSNSG) is a not-for-profit benevolent organisation that has been supporting current Defence and ex-serving members and their special-needs families for more than 25 years. It is available Australia wide at Defence locations.

Volunteers assist local members through advocacy, information pathways and local activities. DSNSG members have access to regular local events organised by the DSNSG Coordinator, along with access to a variety of programs.

To find out what is happening in your area, contact Townsville Coordinator Cherie Davis on 0417 182 233 or email townsville@dsnsg.org.au.

For further information about DSNSG, see dsnsg.org.au or call the DSNSG national helpline on 1800 037 674.

KOOKABURRA KIDS

The Department of Veterans' Affairs funds the Australian Kookaburra Kids Foundation to deliver the Defence Kids Program across Australia, providing camps, activity days and age-appropriate mental-health education focusing on coping skills and resilience, while allowing children to bond with peers who are facing similar challenges.

All young people aged eight to 18 from a Defence or veteran family are welcome to join the program. To find out what camps and activity days are coming up in Townsville, to register a child and to book, see kookaburraidkids.org.au/defence-kids.

RAAF BASE TOWNSVILLE AAFCAFS CAFE

RAAF Base Townsville's AAFCAFS cafe moved to Building 53, a refurbished WWII-era building that was once a sergeants' mess, in mid-2024. At the official opening, Acting SADFO RAAF Base Townsville, WGCDR Paul Howell, said the site would become a focal point for the on-base community during exercise periods and regular operations.

"The refurbishment of the former sergeants' mess has given the base the opportunity to recognise our heritage whilst also enjoying the modern facilities and services on offer through AAFCAFS," WGCDR Howell said.

AAFCAFS Managing Director Tim Manic said the new cafe offered an improved menu with healthy choices. The air-conditioned dining room features Air Force memorabilia and vintage decor in keeping with the building's origin and use.

"Diners can enjoy a rare WWII relic – an engine speed indicator – that was used in the early versions of the RAAF Beaufort Bomber and Avro Anson, and a P2V-7 Neptune turn slip indicator," he said. "Our team worked closely with the base to deliver a high-functioning hospitality space that will serve the community well."

The Neptunes issued to 10SQN operated out of Townsville as anti-submarine reconnaissance aircraft. A working Defence-issued AWA Radiotron tube display sits on the coffee table, along with historic RAAF books. Multiple seating options and a wireless charging station are available.

CHAPLAINS

Air Force chaplains are representatives from various churches and faith groups. They ensure all personnel and their families have access to pastoral care and support. Chaplaincy services within Defence also provide independent support and referrals to assist with accessing health and wellbeing services.

ADF members and their families have 24/7 access to an on-call chaplain. To access a local chaplain, call the Defence switch on 1300 333 362 and ask for the on-call chaplain in the area.

Your local chaplains can also assist in the application process for RAAF Welfare Trust Fund (RWTF) loans. The loans are approved and administered by Canberra-based trustees. The RWTF provides a variety of low-cost loans including home improvement, professional development, long service and emergency loans. Group Life Insurance is available through the RWTF which includes access to loans covering any worthwhile purpose. Details about the loans can be found at raafwelfaretrustfund.gov.au and by searching for the RAAF Welfare Trust Fund on the intranet. Alternatively, contact your local Air Force chaplain.

RAAF BASE TOWNSVILLE GYM

Whether you're a seasoned athlete or just looking to stay active, the Townsville RAAF Base Gym has something for everyone. Open 24/7 and designed with the needs of Defence members and their families in mind, this top-tier facility offers a range of amenities to support all fitness levels and goals.

Comprehensive training spaces

At the heart of the gym is a spacious weights room, fully equipped with free weights, resistance machines and functional training zones. Whether

you're working on strength, endurance or rehabilitation, the setup caters to a variety of training programs. Adjacent to the weights area is the cardio room, stocked with modern treadmills, stationary bikes, rowing, cross-trainers and more – ideal for warm-ups, cool downs or full-blown cardio sessions.

Multi-use indoor court

Need a break from the machines? The full-sized basketball court offers plenty of opportunities for team sports and recreational play. The court is also fitted out for pickleball and other indoor games, providing a flexible and social way to stay active.

Outdoor pool

Cool down or kickstart your day in the 25m outdoor swimming pool, perfect for lap swimming, aqua fitness or recovery sessions. The pool is open weekdays from 0630 to 1930 and weekends from 0830 to 1930, offering convenient access around most schedules.

Open around the clock

The gym's 24/7 access means you can work out whenever it suits you – before a shift, after a mission or during a quiet weekend. For Defence members juggling demanding schedules, this flexibility is key to maintaining a consistent fitness routine.

Who can use the facility?

Access is available to Defence members as well as their dependants who hold a current DCAC card, making it a valuable community resource. It's more than just a gym, it's a place for families to stay healthy, connected and active together.

Ready to train?

The Townsville RAAF Base Gym is waiting for you. Drop by and take advantage of one of the best-equipped fitness centres in the region.

PROFESSIONAL CARE FOR ANIMALS BIG & SMALL

Townsville Veterinary Clinic & North Queensland Specialist Equine Service

- High quality medical care for your furry family members
- Established over fifty years, locally owned
- Purpose built facilities to cater to large and small animals in one location
- 10% discount to Defence Force members.
- Care for pets big or small including companion animal vet services for cats, dogs, birds, reptiles, and pocket pets
- Specialising in equine care and large farm animals



www.townsvillevetclinic.com.au // Ph. 07 4779 0233 // 32-34 Anne Street Aitkenvale, QLD 4818



DEFENCE SUPPORT

Defence offers a range of programs and services to help Australian Defence Force members and their families make the most of the opportunities and challenges of military life.

DEFENCE FAMILIES MAKE a significant contribution to the wellbeing of our Australian Defence Force (ADF) members and the success of their missions. In support of our ADF families, Defence Member and Family Support (DMFS) has a wide range of information and support for families to help them navigate military life.

DMFS delivers national programs and services to ADF families across Australia. There's support available at every stage, from the support for new recruits and their families adjusting to Defence life to partners and children managing the challenges of military life, to the time when a member transitions from permanent service.

Support available from DMFS includes assistance for partners' employment, help with finding childcare, deployment support, assistance for dependants with special needs, social worker support, relocation, support for community groups, help for families during crisis and

emergency, and education support for children. DMFS also holds a number of information sessions and social events throughout the year for military families in the region.

For more information about the services and programs, visit the website www.defence.gov.au/adf-members-families/family-programs-services, contact the 24/7 Defence Member and Family Helpline on 1800 624 608 or email the Helpline for advice at memberandfamilyhelpline@defence.gov.au.

YOUR LOCAL DMFS TEAM

The local DMFS team is made up of military and civilian staff, undertaking a variety of roles including military support, social work, family liaison and education support.

The team provides a range of services to families across the region, including:

- support in times of crisis
- deployment and absence support
- mobility and relocation support

- professional counselling for personal, relationship and family problems
- information sessions, social or support groups
- local education advice and assistance
- special needs recognition and review
- partner employment assistance
- finding childcare.

Make sure you don't miss out on the virtual and face-to-face events DMFS hosts to build and maintain connection with other Defence families in the area. Go to DMFS's Eventbrite page where you can register for free tickets to events. You can also see what local events are on by visiting the events calendar on the website www.defence.gov.au/adf-members-families/local-services-events. Follow us on Facebook and Instagram and keep up-to-date with the latest DMFS news and events.

WHO CAN YOU MEET AT THE LOCAL OFFICE?

- **Defence social workers** are qualified professionals who are knowledgeable about the ADF and the military lifestyle.
- **Family liaison officers** have extensive knowledge of the region and can help families connect with local community groups and support services. They are also proactive in organising a range of information sessions and social events.
- **Education liaison officers** provide information and support to families around children's education and schools in the area.

DMFS PROGRAMS & SERVICES

24-HOUR SUPPORT

If you need support, help, or advice at any

time, contact the Defence Member and Family Helpline on 1800 624 608. The Helpline operates 24-hours a day, seven days a week and is staffed by qualified human services professionals, including social workers and psychologists.

PARTNER EMPLOYMENT

The Partner Employment Assistance Program provides funding for initiatives to assist ADF partners with employment when they are relocated on posting, or if their ADF member is medically transitioning, and for some re-registration costs. Eligible partners may be reimbursed up to \$1500 in a financial year for career support and coaching; professional licensing, checks and registration, and/or employment-related training. For more information, visit <https://www.defence.gov.au/adf-members-families/family-programsservices/support-for-families/partneremployment-assistance-program>.

FAMILIES WITH SPECIAL NEEDS

Families who have recognised family members with special needs can get information and practical assistance to reduce the impact of relocation.

SUPPORT DURING DEPLOYMENT AND TIME APART

DMFS provides a range of services, practical assistance and products to help inform and prepare ADF members and families for every stage of deployment. Support includes advice and referral to local support services, access to resilience programs, assistance in emergencies and crisis, and connection to community groups. Families can also opt in to receive regular deployment support calls by registering with the Defence Member and Family Helpline on 1800 624 608.

CHILDREN'S EDUCATION

DMFS has dedicated education liaison officers to provide advice to families and funds Defence School Mentors to support Defence children through changing schools and parental absence.

ACCESS TO CHILDCARE

DMFS maintains a network of childcare centres around Australia, with priority placement for ADF families. Families who are facing difficulties accessing childcare, such as when they move to a new area or change their work or care arrangements, can also access an individual case management service to help them find registered childcare services in their local community.

EMERGENCY AND CRISIS SUPPORT

DMFS provides a range of practical and emotional support programs for families facing emergency or crisis, including assistance in time of illness, injury, domestic crisis or bereavement. Members and their families can access 24-hour support, social work and assessment, or referral from the all-hours Defence Member and Family Helpline.

TRANSITION TO CIVILIAN LIFE

Joint Transition Authority delivers support to members and their families transitioning to Reserves Service or separating from the ADF. There is a range of support programs to assist ADF members and their families when they transition to civilian life, enabled by a transition coach. The coach helps to build a personalised package of support based on the circumstances and post-transition goals of the member and their family. The coach remains with the member and their family for up to two years post-transition. For more information, please email transition.nthqld@defence.gov.au.

SUPPORT FOR RESERVISTS

The families of Reserve members can access a broad range of support services when the Reservist is on continuous full-time service or away on deployment or exercise.

PARENTS

DMFS offers information and support services for the parents of ADF members to help them understand and manage the challenging aspects of having a son or daughter in the services.

CONNECTION WITH COMMUNITY

Defence families are strongest when they are connected with their local communities. DMFS provides a number of support and information services to help families connect with and contribute to their community.

CONTACT DMFS

The Defence Member and Family Helpline is your first point of call for support, information and connection with your local community. It is staffed by qualified human services professionals, including social workers and psychologists, who can assist you 24 hours a day, seven days a week.

Phone 1800 624 608

Email memberandfamilyhelpline@defence.gov.au

Website [defence.gov.au/members-families](https://www.defence.gov.au/members-families)



MAILING LIST

Scan the QR code to join DMFS NQ's mailing list and keep up-to-date with all the information and events.

↓ The DMFS NQ team.



DMFS TOWNSVILLE WELCOME & INFORMATION EXPO 2027

The DMFS Townsville Welcome & Information Expo will be held in January/February 2027. ADF members and their families in Townsville and surrounds are invited to attend. Discover what the Townsville region has to offer you and your family with more than 100 exhibitors including local community and sporting groups, government organisations and other service providers. You'll also be able to meet the Townsville DMFS team.

Bring the whole family along and enjoy complimentary entry, giveaways, interactive displays and activities, with food and drinks available to purchase.

There'll be something for everyone.

For more information email dmfs.townsville@defence.gov.au or sign up to the DMFS newsletter by scanning the QR code above.



LOCAL SERVICES

To help you and your family settle into the Townsville region, here's a quick guide to local services and amenities.

RAAF BASE TOWNSVILLE is about 6km west of Townsville City, adjacent to Townsville Airport, with which it shares a runway. Lavarack Barracks is about 11km south of the city.

Townsville was founded in 1864 as a port for the fledgling pastoral industry in North Queensland. Following the discovery of gold at Ravenswood and then Charters Towers, the town developed into the principal centre of North Queensland. It now has a population of approximately 234,000, supported by excellent education facilities, healthcare, affordable housing, retail, events, entertainment, dining precincts and a wide range of outdoor recreation options, making the most of more than 300 days of sunshine a year.

LOCAL COUNCIL

Townsville City Council has two service centres:
SERVE Centre, 103 Walker Street, Townsville City.
 Monday to Friday 8am - 5pm.
 Closed on public holidays.

SERVE Centre Citylibraries Riverway,
 20 Village Boulevard, Thuringowa Central.
 Monday to Friday 9am - 5pm.
 Closed on public holidays.
 Phone 13 48 10 during business hours.
 Emergency after hours phone 13 48 10.
townsville.qld.gov.au

GETTING HERE

By air. Townsville Airport has regular services to and from Adelaide, Brisbane, Cairns, Cloncurry, Darwin, Hughenden, Longreach, Mackay, Melbourne, Mount Isa, Sydney and Winton, operated by Jetstar, Qantas, Rex, Virgin and AirNorth, with additional mining charters.
townsvilleairport.com.au

By rail. The Spirit of Queensland runs between Brisbane and Cairns, via Townsville, three times a week in each direction. The Inlander runs between Townsville and Mount Isa, twice a week in each direction.
queenslandrailtravel.com.au

GETTING AROUND

Kinetic operates 13 bus routes in the Townsville area, connecting Townsville City, surrounding suburbs, key shopping centres, James Cook University and Queensland Country Bank Stadium. See translink.com.au for routes, fares and timetables.

Sealink North Queensland runs up to 17 daily return services to Nelly Bay Terminal on Magnetic Island. See sealink.com.au/magnetic-island for routes, fares and timetables.

Taxis: 13cabs 13cabs.com.au, 13 2227. Black & White Cabs blackandwhitecabs.com.au, 133 222. Townsville Taxis 07 4778 9555.

LIBRARIES

Townsville Citylibraries has three branches, a mobile library service which visits various locations around Townsville and an eLibrary accessed by the Townsville Citylibraries App.
Citylibraries Flinders Street. Level 1, Northtown, 280 Flinders Street, Townsville. 07 4727 9666.

Citylibraries Aitkenvale. 4 Petunia Street, Aitkenvale. 07 4727 8310.

Citylibraries Riverway. 20 Sporting Drive, Thuringowa Central. 07 4773 8811.

SWIMMING POOLS

Tobruk Memorial Baths
 32 The Strand, Townsville. 50m heated pool, 25m heated pool and a shallow toddlers' pool with shade cover. Swimming lessons for babies through to adults. Aqua aerobics and disability swimming classes.

Long Tan Memorial Pool
 Corner Lindeman Avenue and Fulham Road, Heatley. 50m heated pool and 25m indoor heated pool.

Kokoda Memorial Pool
 41 Wellington Street, Mundingburra. 25m program heated and shaded pool and children's aquatic playground.

Riverway Lagoons

Village Boulevard, Thuringowa Central.

Two lagoons and a special toddlers' area.

townsville.qld.gov.au/facilities-and-recreation

Northern Beaches Leisure Centre

7-31 Erskine Place, Burdell.

50m heated and shaded pool, heated programs pool, beach pool with play features, water slides and fenced toddler pool.

northernbeachesleisurecentre.com.au

RECREATION

Townsville City Council provides a range of active events and programs and supports local sport and recreation organisations. For information on sports facilities, walking and cycling trails, clubs and events, see activetownsville.com

FLOOD, FIRE & EMERGENCY

In the event of a life-threatening emergency call 000 to connect to Police, Fire and Ambulance.

For assistance or information for:

- Floods or storm assistance (SES) 132 500
- Bushfire updates and information, emergency assistance, contact Queensland Fire & Emergency Services qfes.qld.gov.au
- Health advice, talk to a registered nurse 24 hours a day, seven days a week on 13 HEALTH (13 432 584)
- Disasters and alerts disaster.qld.gov.au

HOSPITALS

Townsville University Hospital. 100 Angus Smith Drive, Douglas. 07 4433 1111. For more information on the hospital and other government healthcare available. townsville.health.qld.gov.au

Mater Private Hospital. 25 Fulham Road, Pimlico and 12-14 Oxford Street, Hyde Park. 07 4727 4444. matertsv.org.au

To find a GP, other regional hospitals and health services, see www.qld.gov.au/health/contacts/service-finder.

CHILDCARE

There is a variety of childcare options in the area. Turn to page 32 for information.

SCHOOLS

Townsville has a range of schooling options including public, private, selective and independent schools. It is important to arrange your housing prior to finalising your schooling choices. Defence does not regard a choice of school as grounds to limit your search for a property. For information on schooling in Queensland turn to page 34.

HIGHER EDUCATION

Townsville's tertiary education campuses include James Cook University (jcu.edu.au) and CQUniversity (cqu.edu.au), as well as Tafe's Trade Training Centre Bohle and Townsville (Pimlico) campus (tafeqld.edu.au).

UTILITIES

You will need to arrange your own utilities such as electricity, gas, pay TV and internet. You should contact your local service providers, or you may like to take advantage of the free Fast Connect service, which will arrange for the disconnection and reconnection of utilities on your behalf. Contact them on 1300 661 464, at fastconnect.net.au, or access the service via Online Services on the Defence Housing Australia website at dha.gov.au. Also see page 28.

SHOPPING

Townsville has a good variety of shops and services. Here are a few of the larger shopping centres.

Townsville Shopping Centre 310-330 Ross River Road, Aitkenvale.

Myer, Big W, Woolworths, BWS and a wide range of services and retailers.

townsvilleshoppingcentre.com.au

The Intersection Townsville Cnr Ross River Road and Nathan Street, Cranbrook.

Coles, Kmart and a range of stores. theintersectiontownsville.com.au

Vincent Market Place Cnr Fulham Road and Nathan Street.

Woolworths and specialty retailers

Willows Shopping Centre 13 Hervey Range Road, Thuringowa Central.

Aldi, Big W, Coles, Woolworths, Priceline, banks, services and a wide range of retailers.

willowsshoppingcentre.com.au

Parkside Plaza Kirwan 148 Bamford Lane, Kirwan. Woolworths and a small range of retailers.

Castletown Cnr Woolcock Street and Kings Road.

Coles, Woolworths, Big W and a range of retailers. castletown.com.au

Fairfield Central Shopping Centre 2/30 Lakeside Drive, Idalia.

Coles, Woolworths and a range of services and retailers. fairfieldcentral.com.au

Domain Central 103/141 Duckworth Street, Garbutt. One of Queensland's largest Homemaker, lifestyle and outlet centres with 60 retailers, including BCF, TK Maxx, The Good Guys, Joyce Mayne and JB Hi-Fi. domaintownsville.qicre.com

Annandale Central Cnr University and MacArthur Drive. Coles and 15-plus specialty stores. annandalecentral.com.au

Thuringowa Village Cnr Dalrymple Road and Thuringowa Drive. Coles and various retailers. thuringowavillage.com.au

To find more shopping hubs, see townsvillenorthqueensland.com.au/things-to-do/shopping-markets

MORE INFORMATION

To find more community services and supports available, visit the Community Information Centre Townsville website, cictownsville.com.au.



Your pets deserve a holiday too!

At AllForPaws Retreat, your pet is part of an active family. Dogs have an average of five hours a day in large runs, and a pool for those who like to swim, plus special-needs one-on-one care, and agility. Cats are well catered for in air conditioned accommodation, complete with scratching posts and hammocks.

8 Duggan Drive, Alligator Creek • info@allforpaws.com.au • www.allforpaws.com.au



07 4778 8157



HOUSING

MOVING HOUSE CAN be both an exciting and daunting prospect – some big decisions need to be made, the most important one being where you are going to live. Children’s education, distance to work for both the member and spouse/ partner, health care, lifestyle preferences and the amenity of available housing are all factors to be considered.

SERVICE RESIDENCES

Unless you own a suitable home in your new posting locality, your first port of call is Defence Housing Australia (DHA). DHA provides housing and related services for Australian Defence Force members and their families through its portfolio of service residences (SR). DHA’s portfolio comprises modern houses, townhouses and apartments in selected locations. The majority are off-base, integrated throughout the local community and in reasonably close proximity to Defence bases and establishments, amenities and services. DHA maintains the currency of its portfolio by upgrading existing properties, sourcing new properties through a variety of construction activities, acquiring properties through traditional real estate markets and directly sourcing and leasing properties from private owners. You are eligible for a SR if you fit into any of these groups:

- You have a spouse, recognised interdependent partner or children who live with you (Accompanied Resident Family)

- You are a member with unaccompanied resident family and your dependants need housing (Unaccompanied Resident Family)
- You have Recognised Other Persons who normally live with you.

More detailed information on entitlements can be found in the Pay and Conditions Manual, Chapter 7, [pay-conditions.defence.gov.au/pacman/chapter-7](https://www.defence.gov.au/pacman/chapter-7), and/or on DHA’s website [dha.gov.au](https://www.dha.gov.au).

SINGLES

DHA also holds some apartments suitable for single members – called Members Choice accommodation. The process for accessing Members Choice or private rental under Rent Allowance (RA) is the same as for families accessing SR, outlined below.

FINDING A SERVICE RESIDENCE

As soon as you know you require a Service Residence, call DHA on 139 342 to obtain a username and password to access Online Services, a unique online tool that will allow you to select your new home. Online Services will show you:

- Homes within your entitlement
- Interior and exterior photos of the homes
- Property details for each home
- A floor plan
- A map showing the location of the home and nearby facilities.

Once you have researched your options, you can reserve a home on Online Services. Note that, whether you are an Accompanied Resident Family

or a single, if you own a home in your current posting location which is suitable for you to live in, you will not be eligible for a SR or RA.

PRIVATE RENTAL

If DHA cannot provide you with a suitable SR, you may be eligible for RA. While DHA will manage your RA application, it is up to you to find a suitable rental property. Rental properties in the region can be sourced from local real estate agencies or on any of the following commercial websites:

- [realestate.com.au/rent](https://www.realestate.com.au/rent)
- [domain.com.au/rent](https://www.domain.com.au/rent)
- [rent.com.au](https://www.rent.com.au).

BUYING A HOUSE

You may feel it’s time to enter the housing market or wish to sell your home in your losing locality and purchase in the gaining locality. Assistance for home purchase may be available through:

- The Defence Home Ownership Assistance Scheme pays a monthly subsidy on a member’s home loan interest. The scheme is administered by the Department of Veterans’ Affairs, for details see [dhoas.gov.au](https://www.dhoas.gov.au).
- The Home Purchase or Sale Expenses Allowance reimburses reasonable buying and selling costs. For details see the Pay and Conditions Manual, [pay-conditions.defence.gov.au/pacman/chapter-7/part-3](https://www.defence.gov.au/pacman/chapter-7/part-3).

Note that a decision to purchase your own home in your new locality does not need to be made before you proceed on posting, you can decide at any time during your posting. However, if you are in RA accommodation, you will need to consider the penalties in your lease for early termination.

MORE INFORMATION

For information on all accommodation options, application forms and to access Online Services, visit DHA’s website, [dha.gov.au](https://www.dha.gov.au).

At times, finding the right housing solution can be challenging. The Directorate of Relocations and Housing is responsible for the provision and delivery of quality housing and related services to ADF members under national contracts and in accordance with Defence Policy. If you require additional support please email DRH.DRHM@defence.gov.au with your enquiry and your local Defence Relocation Manager will be in touch.

POSTING CONNECT

PostingConnect provides an online environment to manage your posting. The platform provides direct access to posting services and is accessible from any device. Log in to ServiceConnect via [defence.gov.au](https://www.defence.gov.au) to access PostingConnect.

more
than
money



NAB DEFENCE FORCE HOME LOANS



Big on Defence

It's why ADF members trust us to help them buy a home. With years of DHOAS insight, we know what Defence life looks like and have the team and reach to back you, wherever service takes you.

🔍 **NAB Defence Force Home Loans**

Let's talk

Christopher Di Giacomo

0472 871 855

Christopher.A.Di.Giacomo@nab.com.au





HEALTH MATTERS

There are a number of services to help manage your family's health in a new posting.

ADF MEMBER HEALTH

Defence provides essential healthcare to all ADF members, on and off base, including medical and dental, mental health, ambulance transport and hospitalisation. ADF members do not need a Medicare card.

TOWNSVILLE HEALTH CENTRE

Bld 918, Edwards Ave. See page 12 for hours.

Contact 07 4430 2717;

jhunq.townsvillehc@defence.gov.au

LAVARACK HEALTH CENTRE

Week days: Bld EO671. Weekends: Bld K1020

Contact 07 4446 8303;

lhc.admin@defence.gov.au

24-HOUR HEALTH SUPPORT

ADF members needing urgent medical treatment when away from base should call 1800 IM SICK (1800 467 425). The IM SICK line is a toll-free, all-hours service for ADF personnel to discuss health concerns over the phone and receive immediate advice on where they need to go to receive appropriate treatment. The service is provided by BUPA under the ADF Health Services Contract.

RECOGNISED DEPENDENTS

Members need to make arrangements for the health care of their families, but note that financial assistance is available (see under: DEFENCE FAMILY HEALTH CARE).

FINDING A GP

To find a local GP, a good place to start is the 'find a health service' tool on the Australian Government's Health Direct website, healthdirect.gov.au/australian-health-services, which allows you to filter out GPs who don't bulk bill. GPs who don't bulk bill will charge you for the visit. You can claim the 'schedule fee' from Medicare, but it will probably be less than the GP's account, leaving a residual cost. Many doctors now offer a service called HICAPS that allows you to claim your Medicare rebate when you pay at the doctor's surgery.

DEFENCE FAMILY HEALTH CARE

The National ADF Family Health Program will reimburse dependants of ADF members for out-of-pocket expenses for all GP visits. Specialist services will also be reimbursed, up to a total allocation of \$800 per dependent which can be shared between dependents. For more information visit adffamilyhealth.com or phone 02 6266 3547.

PRIVATE HEALTH INSURANCE

Medicare makes adequate provision to cover all Australian citizens for their essential health needs. However, Medicare doesn't cover many 'extras' such as ambulance services, most dental services, spectacles, contact lenses, hearing aids and cosmetic surgery.

You may choose to take out private health insurance to provide your family with a wider

range of options and more comprehensive cover. Health insurance policies can be either hospital or general treatment (extras) or a combination of both. Your decision to purchase private insurance is a personal one and will be based on a number of factors:

- The advantages of having more choices, for instance the ability to choose your surgeon/obstetrician/specialist and the hospital you prefer from the private health insurer's agreed providers
- The probability of obtaining treatment faster than you might do on a public hospital waiting list
- Your desire to be covered for the extras
- The cost of private health cover for different options that are offered by the numerous providers in the health-insurance market.

With respect to the cost, you will also need to consider the tax implications of the Medicare Levy surcharge, which (as distinct from the Medicare Levy) is an additional tax imposed on those with a taxable income above a certain threshold who do not have a prescribed level of private health insurance.

The cost of your private health insurance policy will also be influenced by your age when you commence your policy. Once you turn 31, a Lifetime Health Cover (LHC) loading of two percent is added to your hospital cover premium for every year you're without hospital cover, e.g. if you delay until age 40, your LHC would be 20 percent. Note that permanent ADF members are considered to have had private hospital cover while serving.

This article is published as general education and should not be taken as professional advice.

USEFUL WEBSITES

Health insurance

- www.accc.gov.au/consumers/specific-products-and-activities/private-health-insurance
- www.privatehealth.gov.au
- choice.com.au/money/insurance/health

Medicare Levy

- Go to the Australian Tax Office website, ato.gov.au, and search 'Medicare Levy'.
- See the Pay and Conditions Manual at <https://pay-conditions.defence.gov.au/pacman/tax-alerts/div-4>



MAGNETIC MOTORS

ASK US ABOUT OUR DEFENCE DISCOUNT!



Magnetic Motors is proud to support our Defence community, offering exclusive savings across a range of trusted and well-loved brands.

Start your journey with our team today.

MAGNETIC MOTORS

77 - 85 Charters Towers Rd,
Townsville, QLD 4812

(07) 4750 0500

www.magneticmotors.com.au

Scan to
Explore Online



MAPS OF THE AREA



PHOTO: Melissa Findley



PHOTO: Tourism and Events Queensland



PHOTO: Melissa Findley



PHOTO: Tourism and Events Queensland



ok



CORAL

SEA

TOWNSVILLE CITY

Kirwan

Ayr

Home Hill

Guthalungra

Bowen

Whitsundays

Proserpine

Proserpine

Collinsville

N

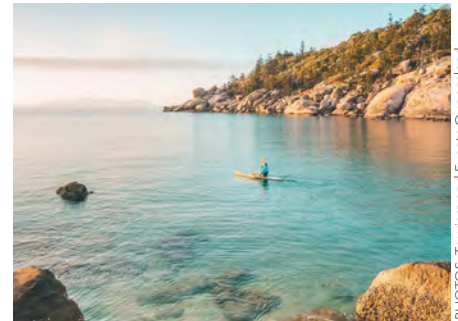
A1

TOWNSVILLE





PHOTOS: Tourism and Events Queensland



PHOTOS: Tourism and Events Queensland



PHOTOS: Tourism and Events Queensland



PHOTOS: Tourism and Events Queensland

→ A M1A2 Abrams Main Battle Tank from 2nd Cavalry Regiment provides security during the D Squadron raising ceremony at Lavarack Barracks.

ARMY'S LARGEST GARRISON

PHOTO: CHU RILEY BLENNERHASSETT

SITTING AT THE FOOT OF THE **ICONIC MOUNT STUART**, Lavarack Barracks is the Australian Army's largest garrison.

Celebrating its 60th anniversary in 2026, it is far more than a barracks. It is a mounting base from which the Australian Army has prepared and deployed tens of thousands of Australia's 'best' to defend our nation and its interests. Equally, it has welcomed them home – both the living and the fallen.

Lavarack Barracks is a workplace for some 7,000 people. It can swell to accommodate 5,000 more, which it routinely practices during the ADF's largest exercises. It is home to some 1,500 soldiers and officers – who live in on-base accommodation. Over a dozen Army Formations, units and other Defence elements occupy its 400ha. It offers cutting-edge training facilities as well as a gateway to the world's best, most diverse and most accessible training areas. It is a maintenance hub and a storage depot for Army's armoured platforms. It is cherished by the Townsville and North Queensland community as the heart and soul of Army in Australia's northeast. It is an annual staging base for over a dozen allies and partners conducting partnered training.

Some key features

Lavarack Barracks is home to:

- Australian Army's Armoured Formation, 3rd Armoured Brigade. The 3rd Armoured Brigade, numbering near 4,000 personnel, comprises: Brigade Headquarters, 2nd Cavalry Regiment (2 CAV), 1st Battalion, The Royal Australian Regiment (1 RAR), 3rd Battalion, The Royal Australian Regiment, 3rd Combat Engineer Regiment (3 CER), 3rd Combat Service Support Battalion, 3rd Combat Signals Regiment (3 CSR) and 4th Regiment, Royal Australian Artillery
- 2nd Battalion, The Royal Australian Regiment – Army's amphibious battalion
- 4th Health Battalion from the 2nd Health Brigade
- 10th Force Support Battalion and Alpha Company, 1st Military Police Battalion from the 17th Sustainment Brigade
- 31st/42nd Battalion from 11th Brigade
- Combat Training Centre, Maritime Wing Army School of Transport, Land Warfare Centre and Army School of Transport from Army's Forces Command
- members from 16th Aviation Brigade live on Lavarack Barracks and work at Hamel Lines, RAAF Base Townsville

- Joint Logistics Unit North Queensland
- Joint Health Unit North Queensland, which operates the base medical and dental centres
- Joint Military Police Unit
- Joint Movement Section
- Australian Army Cadet Unit
- a variety of other units working directly to Army Headquarters, Commander Joint Capabilities and Commander Personnel
- the Securities and Estate Group team which operates, secures and sustains the base and proximate training areas
- the only ADF deployable post office which is an official Australia Post outlet manned by Army personnel.

The 5km long barracks includes:

- its own electricity sub-stations and grid
- fuel reserves exceeding 220,000 litres
- two financial institutions
- multiple gymnasiums
- an Olympic-sized swimming pool
- crocodiles, which have a habit of loitering at the dam on base
- four mascots: Shetland pony (1 RAR), wedge-tailed eagle (2 CAV), alpine dingo (3 CER) and cockatoo (3 CSR).

Air Force Association Supporting Veterans Nationwide



**Your legacy isn't just etched in the
skies – it continues with you.**

The Air Force Association raises much needed funds for projects and activities that enable our Divisions and other Ex Service Organisations to deliver targeted programs and services.

From national advocacy, services and support programs to fostering partnerships and commemorating those who served, we stand with all veterans across Australia.

Join us on social media, honouring the past and championing the future.

Uniting veterans, enriching lives.



Air Force Association™

Stay Connected

raafa.org.au

E: comms@raafa.org.au



SCAN ME

EARLY LEARNING

Choosing the right childcare or early learning service will depend on your family's needs and where you and your child will feel most comfortable.



A **S WELL AS PROVIDING CARE,** childcare and early learning services provide an opportunity for children to develop social, emotional and learning skills. There is a range of care and play-based learning options available for babies and children up to six years of age. Some childcare providers also offer before- and after-school care to school-aged children.

Childcare may be offered by private providers, community groups, government agencies, individuals, babysitters or nannies. There are various education and care options available and it's important to research the type of early education and care that suits you and your children best well in advance.

LONG DAY CARE

A good option for those who work long days and need care for their children during business hours, long day care operates for at least eight hours a day, typically Monday to Friday, in a childcare centre and caters for children from birth to school age. It provides preparation for school through a play-based learning curriculum.

FAMILY DAY CARE

For parents who want their children to learn and play in small groups in a homelike environment, family day care caters for children from birth to 12 years, and is held in the home of a registered educator. They may also offer outside-school-hours care.

KINDERGARTEN

Aimed at children aged three to five years, kindergarten (or preschool) prepares children for school through play-based learning. It can be a standalone service or part of another care service or school. Kindergarten for 15 hours a week, 40 weeks a year is free for Queensland

children attending a government-approved kindergarten program.

APPROVED KINDERGARTEN PROGRAMS

Non-compulsory approved kindergarten programs are taught by qualified early childhood teachers and meet strict quality guidelines set by the Australian and Queensland governments. They are offered in long day care services and sessional kindergarten services for children in the year before Prep (i.e. children who are four years old by 30 June in the year they start). Sessional kindergartens operate during school hours each school term, whereas long day care services can provide a kindergarten program as part of their extended hours of care. Families should speak to their local kindergarten program provider regarding the start date of their child's kindergarten program. earlychildhood.qld.gov.au

OUTSIDE OF SCHOOL HOURS CARE

Operating before and after school and/or during school holidays, this service works well for working parents with school-age children who need care outside of school hours. It provides education and care with a play-based curriculum.

OCCASIONAL CHILDCARE

Offered on a casual basis for short periods of time, occasional childcare caters for children from birth to school age and is useful for parents with short-term or last-minute needs.

CHILDCARE RATINGS

Kindergarten, long day care, outside-school-hours care and family day care services are assessed and rated under the National Quality Framework, which provides a national approach to regulation, assessment and quality improvement for early childhood education and care. To learn more

about ratings go to startingblocks.gov.au. The Queensland Government monitors all services to ensure they meet their legal requirements, regardless of whether they have been assessed and rated.

HOW TO CHOOSE A SERVICE

Consider your child's needs and your family circumstances when choosing childcare. While you can expect national or state-approved services to meet minimum standards, try to visit a selection to compare what they offer before making a decision. Many services have a waiting list, so it is best to make a decision well in advance. Check with your chosen service to find out whether:

- their operating hours and days suit your family
- places are available for new enrolments
- the fees suit your budget
- there are any costs over and above the fees
- there is a fee to be on a waiting list
- children with additional needs are supported
- they offer an education program (such as kindergarten or long day care)
- the staff are well qualified and experienced
- the routine will suit your child
- meals are provided (ask to see a sample meal plan)
- the carer-to-child ratio suits your needs
- you can claim the Child Care Subsidy to help cover the costs of the service.

Visit the service to meet the staff, see the facilities and experience the atmosphere. Make an appointment to ensure someone is available to talk to you. Ask questions and share information about your child. The service should be able to give you written information that may include:

- how your child's day will be organised and their individual needs met



- days and times when the service is open
- excursions and outings
- pick-up and drop-off procedures
- how injuries, illness and infectious diseases are dealt with (including storing and giving medicine)
- hygiene, safety and emergency procedures

- all fees you will have to pay (including public holidays, late fees, holidays and when your child is away sick)
- how you can participate in the decisions affecting your child and how the service will respond to complaints and concerns
- staffing, staff development and child-free preparation times.

For more advice on what to look for see earlychildhood.qld.gov.au.

FINDING A SERVICE

Search the Starting Blocks website (startingblocks.gov.au/find-child-care) to find a kindergarten, long day care, family day care and outside schools hours care, captured under the National Law and National Quality Framework.

DEFENCE SUPPORTED CHILDCARE CENTRES

Defence supports a network of childcare centres, managed by One Tree Community Services, where Defence families receive priority access. Placement of children is allocated based on Defence Priority of Access Guidelines. One Tree Defence Childcare Unit Coral Sea, located at Kirwan, Townsville caters for children from birth to five years of age. dcu.onetree.org.au

CHILDREN WITH SPECIAL NEEDS

The Australian Government's Inclusion Support Program (education.gov.au/child-care-package/inclusion-support-program) and the Queensland Government's Kindergarten Inclusion Support Scheme (earlychildhood.qld.gov.au) may provide funding to help services provide:

- specialist equipment and resources
- training for teachers
- extra teacher aide time
- more educators or carers.

CHILD CARE SUBSIDY

The Australian Government provides families with financial assistance to help cover the costs of approved childcare, under the Child Care Subsidy and Additional Child Care Subsidy. The Child Care Subsidy is income tested and usually paid directly to approved Child Care Services to reduce the fees eligible families pay. You can apply online or in person through Centrelink. servicesaustralia.gov.au

MORE INFORMATION

earlychildhood.qld.gov.au;
www.qld.gov.au/families/babies/childcare/finding/assessing



Explore *More* pathways to success

Prep to Year 12 education that inspires faith, community and opportunities to explore your future.



Enrol now visit ryan.catholic.edu.au



SCHOOLING

Primary and secondary school arrangements can vary from state to state. Here's some information about schooling in Queensland.

IN QUEENSLAND it is compulsory for children to attend school from the age of six years and six months until they turn 16, or they complete Year 10 (whichever comes first). You can choose to send your child to a state/public school (education.qld.gov.au), independent school (www.isq.qld.edu.au) or Catholic school (qcec.catholic.edu.au).

Publicly funded state education includes early childhood development programs; primary schools, secondary schools and P-10/12 schools; special schools; hospital schools; schools of distance education; centres for continuing secondary education; outdoor and environmental education centres; and Queensland Academies.

PRIMARY SCHOOL

Starting school is a major milestone for children and their families, so the decision you make about their education is important. The Department of Education Schools Directory will help you find state and private schools in your area, see schoolsdirectory.eq.edu.au.

Children attending state school usually go to the school closest to where they live. However,

parents can send their children to the state school of their choice, depending on available places. Some schools have a School Enrolment Management Plan, which means students may not be able to attend unless they live within the designated catchment zone. To help you choose the best school for your child, look at the school websites for information about performance, mission, staffing, funding and resources. You can also get information and compare schools at the My School website (myschool.edu.au). Once you have a shortlist, make an appointment to meet the principal and staff and see the school facilities.

To help decide which school is best for your child, consider the following:

- Will the school be able to cater for your child's needs and interests?
- Is the school reasonably close to home, work and carers?
- What facilities does the school offer?
- Are you comfortable with the feel of it?
- What are the school policies on homework, discipline and safety?
- Are other services available, such as after-school care?

Parents may wish to ask schools about:

- the size of the school
- when to enrol
- teaching methods and classroom environment
- uniform policy
- school hours
- levies
- assessment and reporting procedures
- available resources
- extracurricular activities
- communication between home and school
- student participation, e.g. school council
- parental involvement, such as parents and citizens' association.

Copies of the school rules or code of conduct, newsletters, prospectus and annual report will give you further information about the school and its activities.

STARTING SCHOOL

Enrolment forms and details of school enrolment processes are generally published on school websites. Usually, a child can be enrolled a year ahead for state schools and up to two years for non-state schools.

Before starting school, children are usually invited to visit their new school so they can become familiar with it. There are also a lot of things families can do to help make a child's transition to school successful, including:

- getting to know as much about the school as you can
- talking with your child about school
- taking your child to the school to meet the teachers and to find out where things are
- making sure your child knows the transport arrangements for getting to and from school
- getting to know other families with children who will be in the same class as your child
- talking with your child about eating, toileting and hygiene at school
- making sure your child has had experiences of public toilets, libraries and public transport
- if appropriate, ensuring your child knows how before- and after-school-hours care will work
- answering your child's questions about school
- reading some children's books about starting school with your child
- always being positive and realistic about starting school.

SECONDARY SCHOOL

Secondary or high school, Year 7 to 12, is the final period of compulsory education for Queensland students. Students are eligible to enter the first year of secondary school, Year 7, after completing primary education (Prep or Year 1 to Year 6). You may enrol your child in the local secondary school by contacting the school directly. Secondary schools have different ways of introducing primary students to their school. Most students





uniting
early
learning



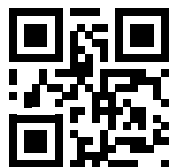
Learning Through Care Thriving Through Connection

Whether you've just arrived in Townsville or are looking for early learning that feels like home, Uniting Early Learning is here to support your family.

We provide nurturing, values-based education and care, grounded in compassion, inclusion and respect for every child.

Every child is valued as an individual. We support their development through meaningful play, strong relationships and a sense of belonging.

Let's find the care that's right for your family - contact us today.



Find out more about our services and locations
uel.org.au



Long Day Care

Long Day Care at our welcoming centres in Kirwan and Riverview

Family Day Care

Family Day Care in small, home-based settings

In Home Child Care

In Home Child Care tailored to families with unique needs or schedules



settle in quickly in response to the carefully designed transition programs initiated by schools. Primary and secondary schools cooperate to ease students through the transition.

The senior years of education (Year 10–12) are important for students wishing to progress to university or further study. Students who have completed all 12 years of compulsory education from Year 1 to 12 will be eligible to qualify for the Queensland Certificate of Education (QCE). Year 12 students applying for tertiary study will generally be assessed on their Australian Tertiary Admission Rank.

ADJUSTING TO A NEW SCHOOL

If your child is transferring to a new school, the principal will have processes to help them adjust, such as buddy systems. Even for students who are looking forward to it, a change in school may cause distress. Signs of stress include irritability, reluctance to talk, sleep disturbance, stomach aches, headaches and not wanting to go to school. The teacher or principal can provide support and advice if your child is having difficulty settling in.

If your child is moving from a non-state school to a state school (or vice versa) in Queensland, the new school can request a transfer note from the previous school. There is no need for parents or carers to complete any additional forms.

If your child has moved to Queensland from interstate, the new school can request consent from you to obtain your child's information from the previous school using the interstate student data transfer note. This system enables the new school to support the educational placements

of new students. A transfer note is not required for students transferring their enrolment from one Queensland state school to another (including primary to secondary). Students who change schools during Year 11 or 12 can receive a credit transfer and their previous study at a school in Queensland, interstate or overseas may count towards their QCE.

When changing schools:

- consider the timing of the move and if it can coincide with a change of term
- involve your children in discussions and decisions about moving – this may help allay any fears or concerns they have

- discuss the forthcoming move with your current school and collect documentation outlining student achievement levels and education history – this will help with appropriate placement at the new school
- prepare a list of your children's particular needs e.g. preferred subjects, transport needs, sporting and other interests
- consider subject choices, special education provisions, transport to and from school, vocational education programs, and cultural and sporting opportunities
- consider behaviour management, discipline and uniform policies.

MORE INFORMATION

education.qld.gov.au; myqce.qcaa.qld.edu.au

STATE SCHOOL DATES FOR 2026/27

Independent and Catholic school term dates can vary so check with the school.

PERIOD	START	FINISH
2026		
Term 2	Monday 20 April	Friday 26 June
School Holidays	Saturday 27 June	Sunday 12 July
Term 3	Monday 13 July	Friday 18 September
School Holidays	Saturday 19 September	Monday 5 October
Term 4	Tuesday 6 October	Friday 11 December
School Holidays	Saturday 12 December	Tuesday 26 January 2027
2027		
Term 1	Wednesday 27 January	Thursday 25 March
School Holidays	Friday 26 March	Sunday 11 April



**TOWNSVILLE
GRAMMAR SCHOOL**

THREE CAMPUSES
NORTH WARD (7-12 DAY + BOARDING)
ANNANDALE + NORTH SHORE (P-6)



FIND OUT MORE



Ignatius Park College



Growing Strong Minds ~ Building a Brotherhood

Enrolment enquiries:

384 Ross River Road, Cranbrook Q 4814

(07) 4796 0222

info@ipc.qld.edu.au





SUPPORT FOR DEFENCE KIDS

If you're keen to minimise any disruption to your child's education as a result of your family's relocation, talk to Defence Member and Family Support.

DEFENCE MEMBER AND FAMILY SUPPORT

(DMFS) provides information, resources and programs to help with the transition between schools and education systems when ADF members and their families move, and provides support for the unique needs of Defence kids.

ADF EQUIP

The ADF Equip Program is designed to help children manage the challenges associated with Defence life. The program supports children to learn appropriate strategies to help them manage the challenge of parental absence and relocation related to service. It includes facilitated sessions tailored to age group and is open to children aged between five and 18 years.

EDUCATION LIAISON OFFICERS

Education liaison officers are experienced staff who help Defence families as they move around the country, providing information, advice, referral and specialised assistance. They are located in each state and territory and have extensive knowledge about the local schools and education systems as well as the challenges faced by Defence children. The assistance provided includes:

- informing families about local schools and education systems
- linking families with special education providers, resources or support agencies

according to their children's individual needs (including special-needs students)

- working with schools to ensure a supportive education environment and to raise awareness of issues facing Defence children
- informing families about Defence support services available, such as financial assistance under the Education Assistance Scheme.

DEFENCE SCHOOL MENTORS

DMFS's school mentor program provides support to the children of ADF members, particularly when moving in and out of a school on posting or when a parent is absent from home. Under the program, mentors in primary and secondary schools support Defence students transitioning from school to school and during times of parental absence. Mentors help schools, families and children to develop strategies to successfully integrate into the school and community. Their role also includes:

- coordinating appropriate welcome and farewell activities
- smoothing the transition between different schools and different education systems (including minimising the impact of relocation on learning outcomes)
- monitoring the social, emotional and academic wellbeing of Defence students

- helping students develop self-confidence, self-reliance and resilience
- referring students to services or school community programs that meet their needs.

To find out which schools in your area are currently funded under the program, see www.defence.gov.au/adf-members-families/family-programs-services/support-for-children/defence-school-mentor-program

CHILDCARE

DMFS maintains a network of childcare centres around Australia and has a range of programs to support the availability of childcare services to Defence families, who might face difficulties accessing childcare. That includes access to an individual case management service to help them find registered childcare services in their local community.

FINANCIAL ASSISTANCE FOR FAMILIES

Defence families can access a range of financial support to help minimise the disruption to schooling caused by posting and relocations. The support available includes:

- tutoring assistance
- boarding school allowance
- tertiary accommodation
- students with special needs
- reimbursement of a lost scholarship
- reunion travel.

The aim is to provide students with educational stability or short-term assistance to help overcome any immediate difficulties with education or emotional wellbeing as a result of relocation.

CONTACT DMFS

For more information about these services, contact the 24/7 Defence Member and Family Helpline on 1800 624 608, visit defence.gov.au/members-families or email memberandfamilyhelpline@defence.gov.au.

RSL Be:Well

VETERAN WELLBEING **ONLINE**

Wellbeing your way.



With free and easy 20-minute online learning modules, RSL Be:Well can help you improve your health and wellbeing at your own pace, in your own home.



CONNECT TODAY



RSL
Queensland



PHOTO: PTE Jessica Gray

THE VETERAN COMMUNITY

There is wide range of support available to veterans of all ages.

THE VETERAN COMMUNITY is a critical part of the broader Defence community. As the majority of Defence staff are veterans themselves, having served overseas and in Australia, our staff and units appreciate the vital role veterans' organisations have in supporting our serving and ex-serving veterans.

The organisations are critical to supporting and advocating for our veterans and their families, ensuring the sacrifices of those who have served before us are appropriately remembered and providing a community for veterans to be part of after they leave the defence forces.

DEPARTMENT OF VETERANS' AFFAIRS

The Department of Veterans' Affairs (DVA) is an Australian Government agency providing support to veterans and their families. It's services and supports include, but are not limited to:

- pensions and compensation
- funding for health care and treatment
- rehabilitation
- counselling
- support with returning to civilian life
- commemorative and community grants

↑ Commander 3rd Brigade, Brigadier Benjamin McLennan CSC and Bar, salutes RAAF aviators during the Anzac Day parade at The Strand, Townsville City, Queensland.

- home-care assistance
- social health programs
- subsidised loans for housing and other housing related benefits
- commemorative activities and historical information.

DVA has been supporting the veteran community in Australia since the end of World War I. Today, the government invests more than \$11.5 billion a year to support veterans and families.

Veterans' recognition. Veterans, including reservists, can apply for the Veterans' Recognition Program as part of the Australian Defence Veterans' Covenant to recognise and acknowledge the unique nature of military service, and the contribution of veterans and their families. Applicants can receive the Veteran Card (where eligible), Lapel Pin and Oath as recognition of their service. The Veteran Card is a redesign of the DVA

Health Cards. While the Veteran Card's primary purpose continues to be providing health and treatment services to veterans, it also provides card holders with access to many different concessions from businesses across Australia as part of a new benefits program. Eligible current and former serving members of the ADF, including reservists, can register for the Veterans' Recognition Program through their MyService account.

Mental health support. DVA has a strong focus on mental health treatment. Under a program called Non-Liability Health Care, DVA funds treatment for all mental health conditions, whether related to service or not, for those with at least one day of continuous full-time service in the ADF, as well as eligible reservists. For further information visit dva.gov.au/get-support/health-support/health-services/mental-health-care/non-liability-health-care-mental-health-veterans.

In addition, mental health support including free and confidential counselling is available 24 hours a day, seven days a week through Open Arms (openarms.gov.au).

Finding employment after the ADF. The Australian Government's Veteran Employment Program (VEP) promotes the skills veterans bring to the civilian workforce to increase employment opportunities and supports employers to recruit and retain veterans and to build veteran-inclusive environments. The VEP website offers information and practical advice on moving to civilian employment, finding a job, identifying skills, undertaking further education, or starting your own business. Resources include the Veteran Employment Toolkit, the Core Skills Identifier, and a searchable list of veteran-friendly employers.

A wide range of organisations have joined the VEP's Veteran Employment Commitment – a growing network of employers who have demonstrated workplace policies and practices that support veteran employment. You can filter potential employers by organisation size, location, industry and types of veteran employment practices they have – such as employment programs, employee groups or on-boarding tailored to veterans. For more, see veteranemployment.gov.au/veterans.

Veteran Health Check. Transitioning can be a busy and challenging time for veterans and their families. There are many competing priorities to sort out – from planning a move, finding a new home, new schools and a new job. Your health can often be forgotten. DVA understands these challenges and is committed to providing veterans with easier access to health care, particularly in times of crisis. All ADF members who transition on or after 1 July 2019, and served at least one day of continuous full-time service, can access a comprehensive fully funded health assessment from their GP each year for the first five years following transition. The Veteran Health Check is specifically designed for veterans and can be accessed through your community or family GP. It can assist you and your GP to identify and support the onset of physical and mental health conditions that are common in the years following transition and organise for early and targeted referrals. Your GP may also make referrals for additional tests, treatment or assessment by other health professionals, and can refer you to relevant DVA services or programs. You will need your DVA Veteran Card to access

the annual Veteran Health Check. Make sure to check that your GP accepts Veteran Cards when making an appointment. If you transitioned from the ADF prior to 1 July 2019, you can still access a one-off comprehensive Veteran Health Check (also known as the One-off ADF post-discharge health assessment) from your GP at any time after you transitioned. For more information on the Veteran Health Check visit dva.gov.au/veteranshealthcheck.

Connect with DVA online. DVA's online portal, MyService enables you to manage your business with DVA quickly and easily online. Through MyService you can keep your details up to date, submit claims and view a digital version of your Veteran Card. For more information or to register for MyService visit dva.gov.au/myservice.

On base support. DVA Veteran Support Officers (VSOs) visit ADF bases nationally and offer members information and advice about the support and entitlements they might be able to receive through DVA. The support ranges from information on MyService through to instructions on how to submit a claim while you are still enlisted. VSOs are DVA staff, not Defence employees. To find out more or to make an appointment, email vso@dva.gov.au. For general enquiries, DVA can be contacted on 1800 VETERAN (1800 838 372).

OPEN ARMS

Open Arms is Australia's leading national provider of mental health and wellbeing support to former and current ADF personnel and their families. Its workforce has an understanding of the unique nature of military service and the



SOMETHING FOR THE WHOLE COMMUNITY AT TOWNSVILLE'S COMMUNITY CLUB.



Wonderful dining with an extensive menu; Sports bar with the largest screen in Townsville; All UFC and Boxing events shown live; Latest in pokies and TAB; Trivia nights, Bingo, Karaoke + free live entertainment. PLUS Current serving members receive free membership, and a 50% discount for their partners, and there's the RSL's free advocacy service on-site.



TOWNSVILLE RSL
139 Charter Towers Rd, Hermit Park
P: 07 4759 9500
www.townsvillersl.com.au



THURINGOWA RSL
139 Charter Towers Rd, Hermit Park
P: 07 4759 9500
www.townsvillersl.com.au

issues that face the military community – many are veterans themselves.

Open Arms' lived-experience peers work with veterans, family supports, community agencies and mental-health clinicians to provide a holistic client-centred experience.

With an increased focus on the lifetime wellbeing of veterans, Open Arms continues to expand its services with eMental Health products and applications. Access information on fitness, nutrition, sleep, social connections and more through the self-help menu at openarms.gov.au. There are also resources on resilience, safety and PTSD available via mobile apps.

Open Arms's Townsville office is in the Nathan Business Centre, 340 Ross River Road, Cranbrook. If you or a family member need support, or to find out more, call 1800 011 046 or visit the website, openarms.gov.au.



RSL QUEENSLAND

If you've ever served in the ADF, RSL Queensland is here for you and your family. For more than 100 years, it has supported veterans, current serving Defence members, and their families in real and meaningful ways. Its mission is to provide care, commemoration

and camaraderie to enable veterans and their families to live with dignity and respect.

Whether you're after employment support, social activities with fellow veterans, or help with finances or DVA claims, RSL Queensland has services to help you and your family every step of the way.

Along with a vibrant and supportive community at RSL Sub Branches across the state, you can also access services and support from Mates4Mates, plus many RSL Peer-Led Programs – providing opportunities for meaningful connection and support.

Free support for DVA claims is now available in person or virtually at RAAF Base Townsville. To book, call 134 775 or email vs@rslqld.org. Find out more at rslqld.org.

MATES4MATES

Mates4Mates is proudly part of RSL Queensland and is here for those impacted by service.

As one of Australia's leading veteran charities, Mates4Mates supports current and ex-serving Defence Force members and families through mental health and physical rehabilitation services, skills-based recovery programs, and social connection activities.

Whether you're a veteran or family member experiencing physical injuries, mental health impacts or social disconnection, Mates4Mates understands the challenges of transitioning from the Defence Force and is here to support you.

With services accessible through the RSL Queensland Veteran & Family Centre in Townsville, Mates4Mates is also located in Brisbane, Ipswich and Maroochydore within South East Queensland. Online skills-based recovery programs and telehealth clinical appointments are also available to support veterans and families no matter where they live.

Since its establishment in 2013, more than 14,000 veterans and families have directly benefited from Mates4Mates services. To access their support today, make the call that makes the difference on 1300 4 MATES (62 837) or visit mates4mates.org.



AIR FORCE ASSOCIATION

The Air Force Association is the peak veterans support organisation for RAAF and ex-RAAF members and their families in

Australia. It is recognised by government and other veteran's organisations as the representative organisation for ex-RAAF members, with a primary goal of providing assistance to fellow members. As one of the oldest veteran support organisations, the Association has been influential in advocating for ex-RAAF members' needs resulting from service in World War I, World War II, post-war Southeast Asia, peacekeeping operations and in more recent years, the high operational tempo of today's modern Air Force.

In Queensland, the Air Force Association (RAAFA) Qld Division comprises 15 branches and a headquarters branch for members who live in a district where there is no branch. RAAFA Qld is well positioned to interact with other veterans' organisations, advocate to the Queensland Government and coordinate Air Force ceremonies throughout the state. The Air Force Association supports the Air Force family through advocacy, assistance, camaraderie, and commemoration.

Advocacy. At the federal and state government levels, we provide an influential voice in representing ex-Air Force members' needs on veterans' issues. We work with our national board, state and federal veteran's authorities and other veterans' support organisations in ensuring the needs and interests of those who have served in the Air Force and their families are met. We also assist Air Force veterans in interpreting veteran policy and entitlements supporting them in their development of compensation claims and appeals.

Commemoration and Heritage. We partner with the RAAF at Townsville and Amberley and other stakeholders, including the Australian Air Force Cadets, conducting Air Force-specific ceremonies, the preservation of Air Force heritage and educating Queenslanders on the Air Force story.

Assistance. We appreciate ex-serving members and their families of various ages will require assistance and support at times and we can be there for them when needed.

Camaraderie. We hold various events across Queensland providing avenues for our broader Air Force family to remain connected.

For information on the Townsville branch, see raafatownsville.com.



↑ A veteran waves to the crowd during an Anzac Day parade at the Strand, Townsville.

PHOTO: CPL Riley Blennerhassett

MATES4MATES

Here for those
impacted by service.



**Mates4Mates is here to
help you reconnect and recover.**

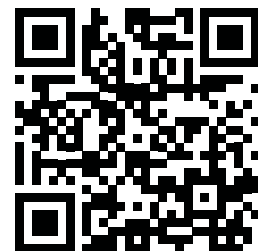
- ✓ Mental health and wellbeing services
- ✓ Physical rehabilitation and wellbeing services
- ✓ Social connection activities
- ✓ Skills-based recovery programs



1300 4 MATES



mates4mates.org



TIME OUT

Flanked by the Great Barrier Reef, the Burdekin Dry Tropics and World Heritage Wet Tropics, Townsville offers a laid-back tropical lifestyle with city comforts.

↑ [The Strand.](#)

PHOTO: Tourism and Events Queensland

ARTS & ENTERTAINMENT

QUEENSLAND MUSEUM TROPICS

Learn about North Queensland's World Heritage-listed rainforests, reefs and life in the tropics, with exhibitions and displays designed to captivate audiences of all ages.

70-102 Flinders Street, Townsville.

museum.qld.gov.au/tropics

PERC TUCKER REGIONAL GALLERY

Housed in one of Townsville's finest heritage buildings, the gallery has a significant collection of North Queensland art and a diverse program of local, national and international exhibitions, with a special focus on North Queensland artists. Floor talks, lectures, education programs and performances of music, theatre and dance supplement exhibitions.

Corner of Flinders Mall and Denham Street, Townsville. townsville.qld.gov.au

MUSEUM OF UNDERWATER ART

A two-hour boat trip off the coast, the Coral Greenhouse and its surrounding gardens is an underwater museum by Jason deCaires Taylor, merging marine science, coral gardening and art. The Ocean Sentinels underwater sculptures blend human figures with marine elements to pay tribute to marine scientists or conservationists. The stunning coral gardens of nearby John Brewer Reef teem with marine life and are a great place for divers and snorkellers to experience the Great Barrier Reef. moua.com.au

PINNACLES GALLERY

A dynamic art space with a program of local and touring exhibitions of visual arts, craft, social history and more in Townsville's Riverway precinct in Thuringowa.

20 Village Boulevard, Thuringowa Central.

townsville.qld.gov.au

MARITIME MUSEUM OF TOWNSVILLE

Permanent exhibitions focus on the SS *Yongala* shipwreck, the Port of Townsville and Townsville during the world wars. A large display of model ships illustrates the evolution of ships. Outdoor displays include the former Bay Rock lighthouse, anchors and a number of original watercraft.

42-68 Palmer Street, South Townsville.

tmml.org.au

TOWNSVILLE MUSEUM

Managed by members and volunteers of the Townsville Museum and Historical Society Inc, the Townsville Museum is dedicated to preserving and displaying Townsville's history from the early 1860s. The collection is housed in two halls. Hall One tells the stories of some of Townsville's early business pioneers, medical professionals and craftsmen with fascinating artifact displays. Hall Two features larger exhibits and traces Townsville's history from the time of European settlement. The museum also has an extensive collection of artifacts, photographs and plans of early Townsville buildings, some of which no longer form part of the landscape.

27 Barbeler Street, Currajong.

townsvillemuseum.com.au

JEZZINE BARRACKS

Redeveloped and transformed into an Aboriginal and military commemorative heritage site, the Jezzine Barracks include an observation deck, a coastal walkway, public artworks and restoration of the Kissing Point Fort complex. The Army Museum of North Queensland (amnq.org.au) sits at the centre of Jezzine Barracks and exhibits objects and stories associated with the history of the Australian Army in North Queensland.

RIVERWAY

Located on the Ross River, the Riverway includes two huge swimming lagoons, the Riverway Arts Centre, Pinnacles Gallery, the Riverwalk, public art, village spine, restaurants and parklands.

QUEENSLAND COUNTRY BANK STADIUM

Home of the NQ Cowboys NRL team, the stadium opened in 2020 and hosts sporting and entertainment events.

2 Pride Close, Railway Estate.

queenslandcountrybankstadium.com.au

CLUDEN PARK

The heritage-listed, multipurpose venue hosts more than 30 horse race meets a year, including the Townsville Cup.

1 Racecourse Road, Cluden.

TOWNSVILLE CIVIC THEATRE

North Queensland's premier cultural facility is owned and managed by Townsville City



PHOTO: Museum of Tropical Queensland/Tourism and Events Queensland



PHOTO: Jezzine Barracks/Tourism and Events Queensland/Budd Photography

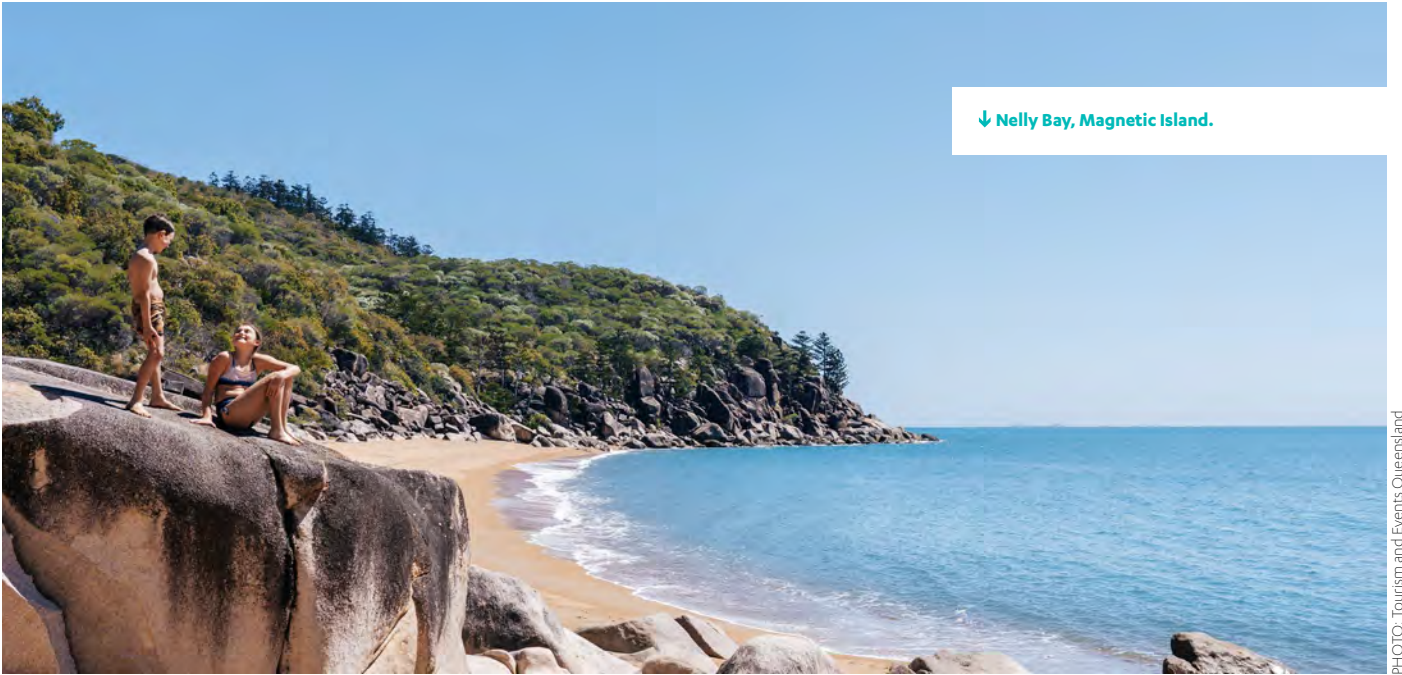
Council. The theatre hosts performances in dance, music, opera, comedy and drama from major Australian companies with international and national artists and local performing arts organisations. townsville.qld.gov.au

DINING & BARS

Townsville's 2.5km beachfront promenade, The Strand takes in views of Magnetic Island with waterfront restaurants and cafes dotted among parklands and waterparks, and along adjacent Gregory Street. In the city centre, Flinders Street and City Lane offer an eclectic mix of restaurants, clubs, pubs and bars. On the city's south bank, Palmer Street is Townsville's premium eating strip with award-winning restaurants for breakfast, lunch or dinner.



PHOTO: Tourism and Events Queensland



↓ Nelly Bay, Magnetic Island.

PHOTO: Tourism and Events Queensland

PARKS & RECREATION

TOWNSVILLE LIES IN the Burdekin Dry Tropics Region. The low-lying coastal plain has rivers, creeks and freshwater wetlands, along with distinctive landmarks such as Castle Hill. The coastline features beaches, mangrove estuaries, salt pans and coastal swamps, home to a wide range of flora and fauna, including endangered and rare species such as mahogany gliders, dugong and cassowaries. The region is partly within and adjoins the Great Barrier Reef World Heritage Area, the Great Barrier Reef Marine Park and the Queensland State Marine Park.

CASTLE HILL

A pink granite monolith towers over the cityscape at 286m and offers 360-degree views over the city and across to Magnetic Island. The 'Hill' retains some military fortifications and local folklore icon – the Saint – painted by a group of seven mates in the 1960s.

BOTANICAL GARDENS

Townsville has three unique botanic gardens.

Anderson Gardens is the largest, with tropical trees, palms, grand avenues and the World Cycad Collection covering 25ha.

Heritage-listed Queens Gardens, the city's oldest botanical garden established in 1870, is a lush green oasis set against Castle Hill.

The 17ha Palmetum boasts the most diverse public collections of palms in the world, set among lawns and water features.

BILLABONG SANCTUARY

About 17km south of Townsville on the Bruce Highway, Billabong Sanctuary offers interactive animal experiences and is a great place to meet koalas, kangaroos, crocodiles and cassowaries.

www.billabongsanctuary.com.au

TOWNSVILLE TOWN COMMON CONSERVATION PARK

Just 6km north of Townsville city centre, and known locally as the Town Common, the park offers stunning coastal views, deep-water lagoons, seasonal wetlands,

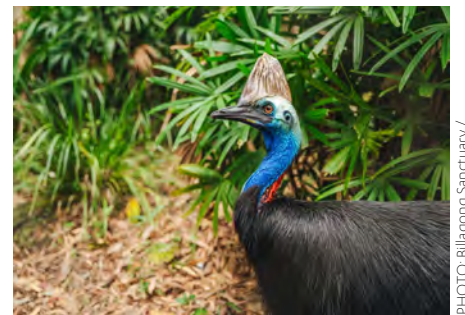


PHOTO: Billabong Sanctuary / Tourism and Events Queensland

coastal woodlands and sheltered beaches bordered by rocky headlands. Mangrove-lined tributaries of the Bohle River meander across the floodplains that fill during the wet summer months. Visitors can hike across the Many Peaks Range, mountain bike the Under the Radar or Smedley's trails or follow the trail to the beautiful and secluded Shelly Beach.

MAGNETIC ISLAND

A 20-minute ferry ride from Townsville, Magnetic Island is a unique natural environment of palm-fringed sandy beaches, large granite boulders, hoop pines and fringing coral reefs. It is home to Northern Australia's largest colony of koalas. Most of the island is protected as national park and features a network of walking tracks. Look for koalas, rock-wallabies, possums and a variety of birds. Swim or snorkel in secluded sandy bays and explore diverse reef and fish life. From November to April stingers (marine jellyfish) are around, so stinger suits are recommended for swimming and water sports. Learn about the Wulgurukaba Aboriginal people, visit historic sites linked



↑ Castle Hill at sunrise.

PHOTO: Tourism and Events Queensland

to World War II, hire a jet ski or kayak, take a cruise or join a fishing charter.

CAPE PALLARENDA

10km north-east of Townsville, Cape Pallarenda Conservation Park contains the historic Quarantine Station, established in 1915, and the Cape Pallarenda Battery, built in 1943 to defend Townsville and its harbour. With in a landscape of open woodland and rocky shores, the park protects a variety of animal and plant life and is a gateway to the Cape Pallarenda trails, a network of shared walking and mountain biking trails in the Cape Pallarenda and Townsville Town Common conservation parks. Trails range from short easy walks to challenging hikes and cross-country mountain bike rides.

PALUMA RANGE NATIONAL PARK

The southern gateway for the Wet Tropics of Queensland World Heritage Area, the park comprises of two sections. The northern section, 91km north of Townsville, features Jourama Falls, framed by rainforest. To the south, 61km north of Townsville, rainforest-

cloaked Mount Spec rises nearly 1000m above the Big Crystal Creek floodplain. The park is home to many animals found only in the Wet Tropics. There is a variety of walks in both sections and good swimming at Little Crystal Creek and at Paradise Waterhole and the Rockslides along Big Crystal Creek.

LAKE PALUMA

Nestled in the wet tropics rainforest about 90km north of Townsville, Lake Paluma has shelters with barbecues for day use and a limited number of camping sites. Swimming and non-motorised vessels are allowed.

BOWLING GREEN BAY NATIONAL PARK

About 25km south of Townsville, Bowling Green Bay National Park covers 57,900ha of coastal and mountainous country, from coastal wetlands and mangrove to mountain-top rainforests. In the summer months at least 30 different species of birds migrate to the park from various parts of the world. At 1221m, Mount Elliot dominates the landscape.

HINCHINBROOK

Just over an hour's drive north of Townsville, the Hinchinbrook Region is the gateway to the World- Heritage Wet Tropics. Ingham, in the heart of Hinchinbrook, is the central town for the local sugar industry and is known for its Italian delicatessens.

Wallaman Falls, in Girringun National Park an hour's drive west of Ingham, is Australia's highest single-drop waterfall with a sheer 268m drop surrounded by ancient rainforest. There is a lookout and a steep track to the base of the falls.

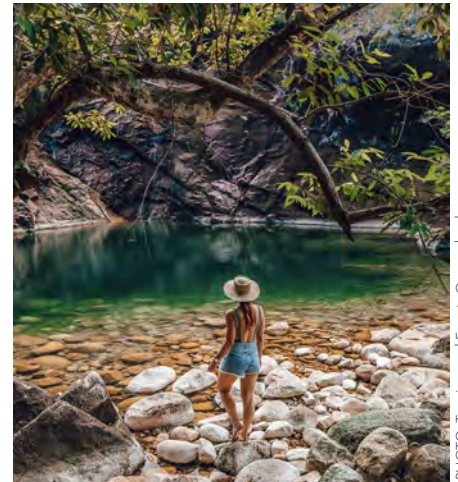


PHOTO: Tourism and Events Queensland

↑ Hinchinbrook swimming hole at the base of Zoe Falls.

Australia's largest island national park, Hinchinbrook Island can be reached with short boat ride from Lucinda through the Hinchinbrook Channel. The island has numerous walks including a multi-day hike along the Thorsborne Trail, covering 32km of ungraded tracks, or guided day tours. Only 40 people are permitted to camp on Hinchinbrook Island at any one time.

With the Hinchinbrook Channel to the north and Coral Sea to the east, Lucinda is popular fishing spot for mangrove jack, coral trout, mud crabs and barramundi.

TYTO Wetlands, a 120-hectare rehabilitated wetland area, is home to unique flora and fauna including more than 240 species of birds, with extensive walking tracks, bird hides and viewing platforms.

PHOTO: Cape Pallarenda mountain biking trails Tourism and Events Queensland



TOWNSVILLE GOLF CLUB ESSENTIAL SERVICES MEMBERSHIP – \$1,485 P.A. (SAVE \$400!)

Enjoy exceptional value with Townsville Golf Club's Essential Services Membership.

Centrally located off Lindsay Street in Rosslea, just minutes from the CBD, our historic course features undulating greens, reticulated fairways and stunning river views. Play socially or competitively, enjoy vibrant club life, and belong to one of Queensland's proudest golfing traditions. **Townsville Golf Club**, "where everyone is welcome".

Lindsay street, Rosslea, Townsville QLD 4812 • +61 7 4779 01338 • info@tvlgc.com.au • proshop@tvlgc.com.au

GREAT BARRIER REEF

Townsville is the gateway to the central section of the Great Barrier Reef, and the headquarters for the Great Barrier Reef Marine Park Authority, Australian Institute of Marine Science, Great Barrier Reef Aquarium and James Cook University's Marine Biology degree.

Within a two-hour boat ride from Townsville, you can access some of the most secluded and pristine sections of the reef. Popular day-trip destinations include John Brewer, Lodestone, Stanley and Wheeler Reefs, offering shallow coral gardens brimming with marine life and deeper coral canyons and bommies for divers to explore up to 25m underwater.

There are plenty of guided day tours to snorkel or dive over the reef, or you can get an overview with a scenic flight. A number of local operators run certified diving courses.

For experienced divers, the SS *Yongala* shipwreck, 22km from Lynch's Beach at Alva, is rated one of the top dive sites in the world and is one of the only places along the east coast of Australia where reef and estuary fish can be seen together, along with numerous species of rays, turtles and coral.

The wreck of the steam-powered SS *City of Adelaide* rests off the shore of Cockle Bay, and is now populated with mangroves.

BEACHES

Townsville has some beautiful beaches, from The Strand to the more secluded northern beaches, including Bushland, Saunders, Toolakea, Toomulla and Balgal Beach. Stinger season runs from November to May and stinger nets are installed at many local beaches including The Strand (north and

south), Pallarenda, Balgal Beach and Picnic Bay. Nets are only removed after the stinger season ends and once no stingers are caught in daily net drags for 14 days.



PHOTO: Tourism and Events Queensland

↑ Snorkelling at John Brewer Reef.

GOLD RUSH HISTORY

CHARTERS TOWNS

The outback town, 130km west of Townsville along the Overlander's Way, was once the largest goldfield in Australia, affectionately known as 'The World'. The legacy of the early gold rush era is evident in the streetscapes, with a pub on every corner.

The Venus Gold Battery, built in 1872 to crush ore, offers an insight into the gold rush and is the largest surviving battery relic in Australia and the oldest in Queensland. Learn about the town's history on the Heritage Walking Trail and in the Zara Clark Museum. The Miner's Cottage is a mini museum where you can try your hand at gold panning.

Charters Towers is also home of one of the largest herds of Texas Longhorns outside of Texas, which can be visited between May and October (texaslonghorn.com.au).



↓ Charters Towers Venus Gold Battery.

PHOTO: Tourism and Events Queensland



PHOTO: Tourism and Events Queensland

↑ Gold panning at The Miners Cottage.



PHOTO: Tourism and Events Queensland

↑ Texas Longhorn Tours.

RAVENSWOOD

At the historic mining town of Ravenswood, gold exploration and processing is still in operation. An arts trail through the town includes all things from goat sculptures and community garden mosaics and finishes up at the famous Whiskey Bar.

MORE INFORMATION:

Townsville Visitor Information Centre,
Townsville Bulletin Square,
340 Flinders Street, Townsville CBD.
townsvillenorthqueensland.com.au

PHOTO: View of Magnetic Island from Castle Hill / Tourism and Events Queensland.



EVERYTHING YOU NEED AROUND TOWN

EDUCATION

RYAN CATHOLIC COLLEGE

At Ryan Catholic College, students explore more pathways to success through a Prep to Year-12 education grounded in faith, community and opportunity. With more than 2,000 students across two campuses, we offer exceptional education, strong values and meaningful experiences beyond the classroom. While many join in Prep or Year 7, places can become available in all years, and we encourage interested families to apply.



CONTACT enrol@ryan.catholic.edu.au, ryan.catholic.edu.au/enrol

ST IGNATIUS PARK COLLEGE

Townsville's only boys-only Catholic college, Ignatius Park College is dedicated to the education of young men: their academic, spiritual and social growth. With exceptional educational and pastoral care programs, we provide students with the tools to create positive relationships inside and outside of the classroom. Our educators are committed to guiding students by the values of the gospel, producing young men who are resilient and confident.



CONTACT 384 Ross River Road, Cranbrook. www.ipc.qld.edu.au

TOWNSVILLE GRAMMAR SCHOOL



Townsville Grammar School offers Pre-Prep to Year 12 (day and boarding) across three campuses in North Ward, Annandale and North Shore. As one of eight grammar schools in Queensland, it focuses on providing an exceptional education in a values-based environment. With leading academic outcomes, Townsville Grammar School offers a strong learning environment supported by an extensive co-curricular and service program. In 2025, the school was listed in the top 75 independent schools in Australia.

CONTACT tgs.qld.edu.au

UNITING EARLY LEARNING

Supporting Queensland families since 1964, Uniting Early Learning offers values-driven care where children play, learn, flourish and thrive. From Long Day Care and Out of School Hours Care to flexible Family Day Care and In Home Child Care, we nurture each unique child in safe, supportive environments. We're here to help you find the service that best fits your family's needs.



CONTACT uel.org.au, contact@uel.org.au

FINANCE

APS BENEFITS GROUP LTD

APS Benefits Group is a profit-for-member organisation offering a wide range of trusted financial services to help you improve your financial wellbeing through all stages of life, including funeral benefits, loans, investments, wills and estate planning, financial planning, tax, accounting and everything in between. Get in touch with our friendly team to learn more.



CONTACT 1300 131 809, apsbenefitsgroup.com.au

NAB DEFENCE FORCE HOME LOANS

As one of the first Defence Home Ownership Assistance Scheme (DHOAS) approved home-loan providers, NAB is committed to serving those who serve. Whether you're still in the ADF or transitioning out, NAB is there for you. ADF members are eligible to apply for a NAB Defence Force Home Loan provided they satisfy the requirements under the DHOAS.

CONTACT Christopher Di Giacomo, Christopher.A.Di.Giacomo@nab.com.au, 0472 871 855, nab.com.au/defence.



TOWNSVILLE VETERINARY CLINIC

Townsville Vet Clinic (TVC) provides the highest quality veterinary medical care for your furry family members in a friendly and relaxed setting. Established in 1975, TVC is locally owned, with first-class facilities to provide veterinary services for large and small animals in one convenient location. We provide care for companion animals (cats, dogs, birds, reptiles) as well as large farm animals, specialising in horses.

CONTACT 32-34 Anne Street, Aitkenvale. 07 4779 0233, townsvillevetclinic.com.au



MAGNETIC MOTORS

Magnetic Motors, one of North Queensland's leading automotive groups, proudly supports our Defence community with an exclusive ABN discount for all ADF personnel and their families. Whether you're looking for a new or quality pre-owned vehicle, our dedicated team is committed to delivering a premium experience with reliable after-sales service you can count on. Visit us today and ask about your Defence member benefits.

CONTACT 77-85 Charters Towers Road, Hermit Park. 07 4750 0500, magneticmotors.com.au



TOWNSVILLE GOLF CLUB

Townsville Golf Club is Queensland's oldest golf club and Australia's fourth oldest, proudly established in 1893. The beautifully maintained course features large undulating greens, fully reticulated fairways, centenarian rain trees and abundant birdlife. Social play and competitions are available most days, with facilities ideal for casual golf, corporate golf days and business events. Everyone is welcome.



TOWNSVILLE RSL

There's something for everyone at Townsville's community club: wonderful dining with an extensive menu; sports bar with the largest screen in Townsville; all UFC and boxing events shown live; latest pokies and TAB. Plus trivia nights, bingo, karaoke and free live entertainment. Current serving members receive free membership and a 50 percent discount for their partners. There's also the RSL's free advocacy service on site.

CONTACT 139 Charter Towers Road, Hermit Park. 07 4759 9500, townsvillersl.com.au



MIKE CARNEY GROUP

Since opening our doors 40 years ago, we've expanded to become a crucial business to the North Queensland economy and proudly support a range of community organisations and events. We specialise in providing new Toyota, pre-owned vehicles, servicing and support to people within Townsville and across wider North Queensland.

CONTACT 41 Dalrymple Road, Garbutt. 07 4727 7000, townsvillemazda.com.au



MATES4MATES

Mates4Mates is proudly part of RSL Queensland and has supported more than 14,000 current and ex-serving Australian Defence Force members and families impacted by service. If you're looking to reconnect and recover, Mates4Mates offers mental health and physical rehabilitation services, skills and wellbeing programs, and social connection activities. Reach out to the Townsville team today.

CONTACT 1300 4 MATES (62 837), mates4mates.org



ALL FOR PAWS PET RETREAT

At All For Paws Pet Retreat, your pet is part of an active family. Dogs have more than five hours a day in large runs, and a pool ideal for overcoming injuries (or for those who just love water), plus special-needs one-on-one care and agility training. Cats are well catered for in their secure indoor area, complete with scratching poles and hammocks.

CONTACT 8 Duggan Dr, Alligator Creek. Phone 07 4778 8157, email info@allforpaws.com.au, allforpaws.com.au



RSL QUEENSLAND

RSL Queensland provides care, commemoration and camaraderie to enable veterans and their families to live with dignity and respect. Whether you're after employment support, social activities with fellow veterans, or help with finances or DVA claims, RSL Queensland has services to help you and your family every step of the way. Free support for DVA claims is now available in person at RAAF Base Townsville.

CONTACT 134 775, email vs@rslqld.org, rslqld.org





MIKE CARNEY GROUP

BUILT FOR ALL YOUR VEHICLE ADVENTURES

Established almost 40 years ago, Mike Carney Group is North Queensland's premier group of dealerships, with showrooms and service centres across Townsville, Charters Towers, and Ingham. We are committed to delivering quality, safety, and innovation in everything we do, while at the same time finding ways to improve.

Browse our range of vehicles and get in touch with our team for a great deal.

MIKE CARNEY GROUP

Mike Carney Toyota mikecarneytoyota.com.au

Mike Carney Mahindra mikecarneymahindra.com.au

Charters Towers Toyota charterstowerstoyota.com.au

Charters Towers Mahindra charterstowersmahindra.com.au

Ingham Toyota inghamtoyota.com.au

Lexus of Townsville lexusoftownsville.com.au

4WD Central 4wdc.com.au



Protecting the financial wellbeing of Defence families since 1905.



Funeral Benefits

Personal Loans

Car & Property Loans

Term Investments

Financial Planning

Tax & Accounting

Wills & Estates